

Anti-PDE10A antibody (250-325) (STJ502199)

GENERAL INFORMATION

Product Type	Primary antibodies
Applications	CM/ELISA/ICC/IF/IHC/IP/WB
Host / Source	Rabbit
Reactivity	Human/Monkey/Mouse/Rat

PRODUCT PROPERTIES

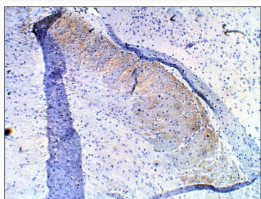
Clonality	Polyclonal
Concentration	0.7 µg/µl
Conjugation	Unconjugated
Purification	Affinity Purified
Dilution Range	WB: 1:500 DB: 1:10, 000 ELISA: 1:10, 000 IP: 1:200 IHC: 1:100-1:150 ICC: 1:100-1:150 IF: 1:100-1:150 CFM: 1:100-1:150
Formulation	Contains Tris, HCl/Glycine buffer pH 7.4-7.8, 30% Glycerol and 0.5% BSA, along with cryo-protective agents, HEPES, and long-term preservatives (0.02% Sodium Azide).
Isotype	IgG
Storage Instruction	Store at -20°C for long term storage. Avoid freeze-thaw cycles.

TARGET INFORMATION

Gene ID	10846
Gene Symbol	PDE10A
UniProt ID	PDE10_HUMAN
Immunogen Region	250-325
Specificity	This antibody has no cross-reactivity against any other PDE family members tested so far. This antibody will detect all PDE10A variants and subtypes.

ADDITIONAL INFORMATION

Note STRICTLY FOR FURTHER SCIENTIFIC RESEARCH USE ONLY (RUO). MUST NOT TO BE USED IN DIAGNOSTIC OR THERAPEUTIC APPLICATIONS.



Immunohistochemistry with Anti-PDE10A Antibody (STJ502199) at 1:100 dilution in Buffer. DAB (brown) staining and Haematoxylin QS (blue) counterstain. 40X magnification. FFPE section.