

Anti-PAX5 antibody (1-50) (STJ502155)

GENERAL INFORMATION

Product Type	Primary antibodies
Applications	ELISA/WB
Host / Source	Rabbit
Reactivity	Human

PRODUCT PROPERTIES

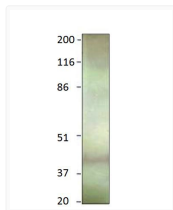
Clonality	Polyclonal
Concentration	0.65-0.75 $\mu\text{g}/\mu\text{l}$
Conjugation	Unconjugated
Purification	Affinity Purified
Dilution Range	WB: 1:500 DB: 1:10, 000 ELISA: 1:10, 000
Formulation	Contains Tris, HCl/Glycine buffer pH 7.4-7.8, 30% Glycerol and 0.5% BSA, along with cryo-protective agents, Hepes, and long-term preservatives (0.02% Sodium Azide).
Isotype	IgG
Storage Instruction	Store at -20°C for long term storage. Avoid freeze-thaw cycles.

TARGET INFORMATION

Gene ID	5079
Gene Symbol	PAX5
UniProt ID	PAX5_HUMAN
Immunogen Region	1-50

ADDITIONAL INFORMATION

Note STRICTLY FOR FURTHER SCIENTIFIC RESEARCH USE ONLY (RUO). MUST NOT TO BE USED IN DIAGNOSTIC OR THERAPEUTIC APPLICATIONS.



Western blot with Anti-PAX5 Antibody (STJ502155) with PAX5 peptide. Antibody at 1:500 dilution in buffer.