

Anti-ADCY8 antibody (STJ502060)

GENERAL INFORMATION

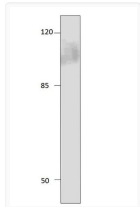
| | |
|---------------|--------------------|
| Product Type | Primary antibodies |
| Applications | ELISA/WB |
| Host / Source | Rabbit |
| Reactivity | Human/Mouse/Rat |

PRODUCT PROPERTIES

| | |
|---------------------|--|
| Clonality | Polyclonal |
| Concentration | 0.6 $\mu\text{g}/\mu\text{l}$ |
| Conjugation | Unconjugated |
| Purification | Affinity Purified |
| Dilution Range | WB: 1:500 DB: 1:10, 000 ELISA: 1:10, 000 |
| Formulation | Contains Tris, HCl/Glycine buffer pH 7.4-7.8, 30% Glycerol and 0.5% BSA, along with cryo-protective agents, Hepes, and long-term preservatives (0.02% Sodium Azide). |
| Isotype | IgG |
| Storage Instruction | Store at -20°C for long term storage. Avoid freeze-thaw cycles. |

ADDITIONAL INFORMATION

Note **STRICTLY FOR FURTHER SCIENTIFIC RESEARCH USE ONLY (RUO). MUST NOT TO BE USED IN DIAGNOSTIC OR THERAPEUTIC APPLICATIONS.**



Western blot with Anti-ADCY8 Antibody (STJ502060) and PAC8 peptide on rat at 1:250 dilution in buffer on a 10% SDS gel.