

Anti-SLC9A1 antibody (700-750) (STJ501918)

GENERAL INFORMATION

Product Type	Primary antibodies
Applications	ELISA/IP/WB
Host / Source	Rabbit
Reactivity	Human/Monkey/Mouse/Rat

PRODUCT PROPERTIES

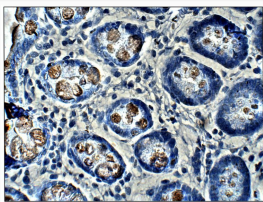
Clonality	Polyclonal
Concentration	0.5-1.5 $\mu\text{g}/\mu\text{l}$
Conjugation	Unconjugated
Purification	Affinity Purified
Dilution Range	WB: 1:500 ELISA: 1:10, 000 IP: 1:200 IHC: 1:50-1:150 ICC: 1:50-1:150
Formulation	Contains Tris, HCl/Glycine buffer pH 7.4-7.8, 30% Glycerol and 0.5% BSA, along with cryo-protective agents, Hepes, and long-term preservatives (0.02% Sodium Azide).
Isotype	IgG
Storage Instruction	Store at -20°C for long term storage. Avoid freeze-thaw cycles.

TARGET INFORMATION

Gene ID	6548
Gene Symbol	SLC9A1
UniProt ID	SL9A1_HUMAN
Immunogen Region	700-750

ADDITIONAL INFORMATION

Note STRICTLY FOR FURTHER SCIENTIFIC RESEARCH USE ONLY (RUO). MUST NOT TO BE USED IN DIAGNOSTIC OR THERAPEUTIC APPLICATIONS.



Immunohistochemistry of baboon Large Intestine with Anti-SLC9A1 primary antibody (STJ501918) at 1:50 dilution in Buffer. Section was treated with DAB and Haematoxylin stain. Magnification is at 40X.