

Anti-MME antibody (200-250) (STJ501895)

GENERAL INFORMATION

Product Type	Primary antibodies
Applications	CM/ELISA/ICC/IF/IHC/IP/WB
Host / Source	Rabbit
Reactivity	Human/Mouse/Rat

PRODUCT PROPERTIES

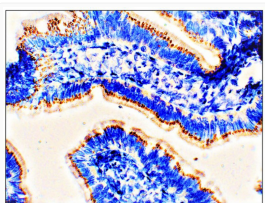
Clonality	Polyclonal
Concentration	0.72-0.78 $\mu\text{g}/\mu\text{l}$
Conjugation	Unconjugated
Purification	Affinity Purified
Dilution Range	WB: 1:500 ELISA: 1:10,000 IP: 1:250 IHC: 1:250 ICC: 1:250 IF: 1:250
Formulation	Contains Tris, HCl/Glycine buffer pH 7.4-7.8, 30% Glycerol and 0.5% BSA, along with cryo-protective agents, Hepes, and long-term preservatives (0.02% Sodium Azide).
Isotype	IgG
Storage Instruction	Store at -20°C for long term storage. Avoid freeze-thaw cycles.

TARGET INFORMATION

Gene ID	4311
Gene Symbol	MME
UniProt ID	NEP_HUMAN
Immunogen Region	200-250

ADDITIONAL INFORMATION

Note STRICTLY FOR FURTHER SCIENTIFIC RESEARCH USE ONLY (RUO). MUST NOT TO BE USED IN DIAGNOSTIC OR THERAPEUTIC APPLICATIONS.



Immunohistochemistry of mouse small intestine with Anti-MME primary antibody (STJ501895) at 1:50 dilution in buffer. Section was treated with DAB and Haematoxylin stain. Magnification is at 40X.