

Anti-MAP3K12 antibody (270-320) (STJ501666)

GENERAL INFORMATION

Product Type	Primary antibodies
Applications	ELISA/IP/WB
Host / Source	Rabbit
Reactivity	Human/Mouse/Rat

PRODUCT PROPERTIES

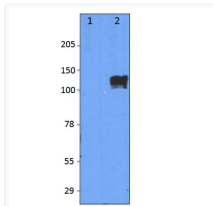
Clonality	Polyclonal
Concentration	0.68 µg/µl
Conjugation	Unconjugated
Purification	Affinity Purified
Dilution Range	WB: 1:500 DB: 1:10, 000 ELISA: 1:10, 000 IP: 1:200
Formulation	Contains Tris, HCl/Glycine buffer pH 7.4-7.8, 30% Glycerol and 0.5% BSA, along with cryo-protective agents, Hepes, and long-term preservatives (0.02% Sodium Azide).
Isotype	IgG
Storage Instruction	Store at -20°C for long term storage. Avoid freeze-thaw cycles.

TARGET INFORMATION

Gene ID	7786
Gene Symbol	MAP3K12
UniProt ID	M3K12_HUMAN
Immunogen Region	270-320

ADDITIONAL INFORMATION

Note STRICTLY FOR FURTHER SCIENTIFIC RESEARCH USE ONLY (RUO). MUST NOT TO BE USED IN DIAGNOSTIC OR THERAPEUTIC APPLICATIONS.



Western blot with Anti-MAP3K12 Antibody (STJ501666) on 1) Mock transfected cells, 2) MAP3K12 transfected cells with peptide. Antibody is at 1:500 dilution in buffer.