

Anti-LILRB3 antibody (580-631) (STJ501604)

GENERAL INFORMATION

Product Type	Primary antibodies
Applications	ELISA/IHC/IP/WB
Host / Source	Rabbit
Reactivity	Human/Monkey

PRODUCT PROPERTIES

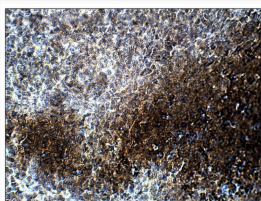
Clonality	Polyclonal
Concentration	0.74 µg/µl
Conjugation	Unconjugated
Purification	Affinity Purified
Dilution Range	WB: 1:500 DB: 1:20,000 ELISA: 1:20,000 IP: 1:200 IHC: 1:50-1:150
Formulation	Contains Tris, HCl/Glycine buffer pH 7.4-7.8, 30% Glycerol and 0.5% BSA, along with cryo-protective agents, Hepes, and long-term preservatives (0.02% Sodium Azide).
Isotype	IgG
Storage Instruction	Store at -20°C for long term storage. Avoid freeze-thaw cycles.

TARGET INFORMATION

Gene ID	102725035/107987462
Gene Symbol	LILRB3
UniProt ID	LILRB3_HUMAN
Immunogen Region	580-631
Specificity	This antibody will detect all three isoforms of human LILRB3 protein.

ADDITIONAL INFORMATION

Note STRICTLY FOR FURTHER SCIENTIFIC RESEARCH USE ONLY (RUO). MUST NOT TO BE USED IN DIAGNOSTIC OR THERAPEUTIC APPLICATIONS.



Immunohistochemistry of baboon spleen with Anti-LILRB3 primary antibody (STJ501604) at 1:100 dilution in Buffer. Section was treated with DAB and Haematoxylin stain. Magnification is at 40X.