

## Anti-LAMP1 antibody (300-350) (STJ501567)

### GENERAL INFORMATION

Product Type	Primary antibodies
Applications	DB/ELISA/IP/WB
Host / Source	Rabbit
Reactivity	Human/Monkey

### PRODUCT PROPERTIES

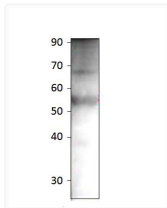
Clonality	Polyclonal
Concentration	0.55-0.75 $\mu\text{g}/\mu\text{l}$
Conjugation	Unconjugated
Purification	Affinity Purified
Dilution Range	WB: 1:500 DB: 1:10,000 ELISA: 1:10,000 IMM: 1:150
Formulation	Contains Tris, HCl/Glycine buffer pH 7.4-7.8, 30% Glycerol and 0.5% BSA, along with cryo-protective agents, Hepes, and long-term preservatives (0.02% Sodium Azide).
Isotype	IgG
Storage Instruction	Store at -20°C for long term storage. Avoid freeze-thaw cycles.

### TARGET INFORMATION

Gene ID	<a href="#">3916</a>
Gene Symbol	<a href="#">LAMP1</a>
UniProt ID	<a href="#">LAMP1_HUMAN</a>
Immunogen Region	300-350

### ADDITIONAL INFORMATION

Note STRICTLY FOR FURTHER SCIENTIFIC RESEARCH USE ONLY (RUO). MUST NOT TO BE USED IN DIAGNOSTIC OR THERAPEUTIC APPLICATIONS.



Western blot with Anti-LAMP1 Antibody (STJ501567) of SKNMC cell at 1:500 dilution in buffer.