

## Anti-LCT antibody (1080-1130) (STJ501564)

### GENERAL INFORMATION

Product Type	Primary antibodies
Applications	CM/ELISA/ICC/IF/IHC/IP/WB
Host / Source	Rabbit
Reactivity	Human/Mouse/Rat

### PRODUCT PROPERTIES

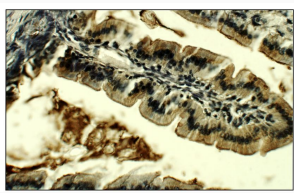
Clonality	Polyclonal
Concentration	0.65-0.87 $\mu\text{g}/\mu\text{l}$
Conjugation	Unconjugated
Purification	Affinity Purified
Dilution Range	WB: 1:500 DB: 1:10, 000 ELISA: 1:10, 000 IP: 1:200 IHC: 1:50 ICC: 1:50 IF: 1:50 CFM: 1:50
Formulation	Contains Tris, HCl/Glycine buffer pH 7.4-7.8, 30% Glycerol and 0.5% BSA, along with cryo-protective agents, HEPES, and long-term preservatives (0.02% Sodium Azide).
Isotype	IgG
Storage Instruction	Store at -20°C for long term storage. Avoid freeze-thaw cycles.

### TARGET INFORMATION

Immunogen Region	1080-1130
------------------	-----------

### ADDITIONAL INFORMATION

Note STRICTLY FOR FURTHER SCIENTIFIC RESEARCH USE ONLY (RUO). MUST NOT TO BE USED IN DIAGNOSTIC OR THERAPEUTIC APPLICATIONS.



Immunohistochemistry of mouse tissue with Anti-Lactase (LCT) primary antibody (STJ501564) at 1:50 dilution in Buffer. Section was treated with DAB and Haematoxylin stain.