

## Anti-FEL D1 Major allergen 1 polypeptide chain 1 antibody (42-88) (STJ500995)

### GENERAL INFORMATION

Product Type	Primary antibodies
Applications	ELISA/IP/WB
Host / Source	Rabbit
Reactivity	Cat

### PRODUCT PROPERTIES

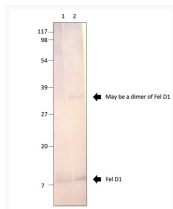
Clonality	Polyclonal
Concentration	0.65-0.75 $\mu\text{g}/\mu\text{l}$
Conjugation	Unconjugated
Purification	Affinity Purified
Dilution Range	WB: 1:500 DB: 1:10, 000 ELISA: 1:10, 000 IP: 1:150
Formulation	Contains Tris, HCl/Glycine buffer pH 7.4-7.8, 30% Glycerol and 0.5% BSA, along with cryo-protective agents, Hepes, and long-term preservatives (0.02% Sodium Azide).
Isotype	IgG
Storage Instruction	Store at -20°C for long term storage. Avoid freeze-thaw cycles.

### TARGET INFORMATION

Immunogen Region	42-88
------------------	-------

### ADDITIONAL INFORMATION

Note STRICTLY FOR FURTHER SCIENTIFIC RESEARCH USE ONLY (RUO). MUST NOT TO BE USED IN DIAGNOSTIC OR THERAPEUTIC APPLICATIONS.



Western blot with Anti-FEL D1 Major allergen 1 polypeptide chain 1 Antibody (STJ500995) with 1) Control Cat Saliva 2) Mutated Cat Saliva. 60ul of sample was applied to each lane.