

Anti-FEL D1 Major allergen 1 polypeptide chain 1 antibody (1-50) (STJ500993)

GENERAL INFORMATION

Product Type	Primary antibodies
Applications	ELISA/IP/WB
Host / Source	Rabbit
Reactivity	Cat

PRODUCT PROPERTIES

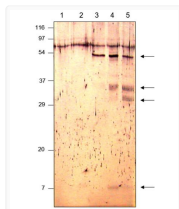
Clonality	Polyclonal
Concentration	0.65-0.75 $\mu\text{g}/\mu\text{l}$
Conjugation	Unconjugated
Purification	Affinity Purified
Dilution Range	WB: 1:500 DB: 1:10, 000 ELISA: 1:10, 000 IP: 1:150
Formulation	Contains Tris, HCl/Glycine buffer pH 7.4-7.8, 30% Glycerol and 0.5% BSA, along with cryo-protective agents, Hepes, and long-term preservatives (0.02% Sodium Azide).
Isotype	IgG
Storage Instruction	Store at -20°C for long term storage. Avoid freeze-thaw cycles.

TARGET INFORMATION

Immunogen Region	1-50
------------------	------

ADDITIONAL INFORMATION

Note STRICTLY FOR FURTHER SCIENTIFIC RESEARCH USE ONLY (RUO). MUST NOT TO BE USED IN DIAGNOSTIC OR THERAPEUTIC APPLICATIONS.



Western blot with Anti-FEL D1 Major allergen 1 polypeptide chain 1 Antibody (STJ500993) with 1) Control Cat Saliva 2) Mutant Cat Saliva 3) Mutant Cat Saliva 4) Mutant Cat Saliva. Primary antibody dilution at 1:500 in buffer. Each lane has 40 μl of saliva extract. SDS-PAGE on 14% gel.