

Anti-Dopamine Receptor D3 antibody (STJ500714)

GENERAL INFORMATION

Product Type	Primary antibodies
Applications	ELISA/IP/WB
Host / Source	Rabbit
Reactivity	Human/Mouse/Rat

PRODUCT PROPERTIES

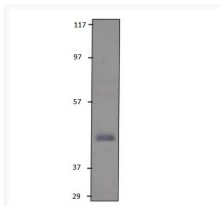
Clonality	Polyclonal
Concentration	0.67 µg/µl
Conjugation	Unconjugated
Purification	Affinity Purified
Dilution Range	WB: 1:1, 000-1:1, 5000 DB: 1:50, 000 ELISA: 1:50, 000 IP: Use at an assay dependent dilution. 2 µl of this antibody will immunoprecipitate 65-80% dopamine recombinant D3 receptor protein from COS1 cells. IF: Use at a concentration of
Formulation	Contains Tris, HCl/Glycine buffer pH 7.4-7.8, 30% Glycerol and 0.5% BSA, along with cryo-protective agents, Hepes, and long-term preservatives (0.02% Sodium Azide).
Isotype	IgG
Storage Instruction	Store at -20°C for long term storage. Avoid freeze-thaw cycles.

TARGET INFORMATION

Gene ID	29238
Gene Symbol	Drd3
UniProt ID	DRD3_RAT

ADDITIONAL INFORMATION

Note STRICTLY FOR FURTHER SCIENTIFIC RESEARCH USE ONLY (RUO). MUST NOT TO BE USED IN DIAGNOSTIC OR THERAPEUTIC APPLICATIONS.



Western blot with Anti-Dopamine Receptor D3 Antibody (STJ500714) with Dopamine Receptor D3 Positive Control peptide. Antibody dilution at 1:50.