

## Anti-DRD2 antibody (STJ500709)

### GENERAL INFORMATION

Product Type	Primary antibodies
Applications	CM/ELISA/ICC/IF/IHC/IP/WB
Host / Source	Rabbit
Reactivity	Human/Mouse/Rat

### PRODUCT PROPERTIES

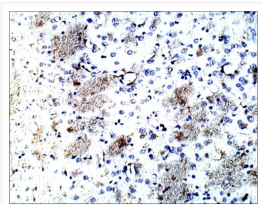
Clonality	Polyclonal
Concentration	0.55µg/µl
Conjugation	Unconjugated
Purification	Affinity Purified
Dilution Range	WB: 1:1, 000-1:1, 5000 ELISA: 1:50, 000 IP: 1:200 IHC: 1:200 ICC: 1:200 IF: 1:200
Formulation	Contains Tris, HCl/Glycine buffer pH 7.4-7.8, 30% Glycerol and 0.5% BSA, along with cryo-protective agents, Hepes, and long-term preservatives (0.02% Sodium Azide).
Isotype	IgG
Storage Instruction	Store at -20°C for long term storage. Avoid freeze-thaw cycles.

### TARGET INFORMATION

Gene ID	<a href="#">1813</a>
Gene Symbol	<a href="#">DRD2</a>
UniProt ID	<a href="#">DRD2_HUMAN</a>

### ADDITIONAL INFORMATION

Note STRICTLY FOR FURTHER SCIENTIFIC RESEARCH USE ONLY (RUO). MUST NOT TO BE USED IN DIAGNOSTIC OR THERAPEUTIC APPLICATIONS.



Immunohistochemistry of rat brain with Anti-DRD2 primary antibody (STJ500709) at 1:100 dilution in Buffer. Section was treated with DAB and Haematoxylin stain. Magnification is at 20X.