

Anti-CHERP antibody (846-913) (STJ500534)

GENERAL INFORMATION

Product Type	Primary antibodies
Applications	CM/ELISA/ICC/IF/IHC/WB
Host / Source	Rabbit
Reactivity	Human/Monkey/Mouse/Rat

PRODUCT PROPERTIES

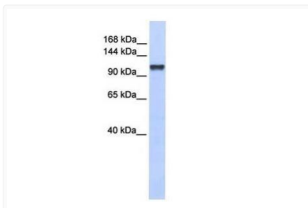
Clonality	Polyclonal
Concentration	0.7 µg/µl
Conjugation	Unconjugated
Purification	Affinity Purified
Dilution Range	WB: 1:500 IP: 1:200 IHC: 1:200 ICC: 1:200 IF: 1:200 CFM: 1:200
Formulation	Contains Tris, HCl/Glycine buffer pH 7.4-7.8, 30% Glycerol and 0.5% BSA, along with cryo-protective agents, Hepes, and long-term preservatives (0.02% Sodium Azide).
Isotype	IgG
Storage Instruction	Store at -20°C for long term storage. Avoid freeze-thaw cycles.

TARGET INFORMATION

Gene ID	10523
Gene Symbol	CHERP
UniProt ID	CHERP_HUMAN
Immunogen Region	846-913

ADDITIONAL INFORMATION

Note STRICTLY FOR FURTHER SCIENTIFIC RESEARCH USE ONLY (RUO). MUST NOT TO BE USED IN DIAGNOSTIC OR THERAPEUTIC APPLICATIONS.



Western blot with Anti-CHERP Antibody (STJ500534) at 1 µg/ml (in 5% skim milk / PBS buffer) + 293T cell lysate at 10 µg.