

Anti-CDX2 antibody (100-200) (STJ500496)

GENERAL INFORMATION

Product Type	Primary antibodies
Applications	ELISA/IHC/IP/WB
Host / Source	Rabbit
Reactivity	Human/Monkey/Mouse/Rat

PRODUCT PROPERTIES

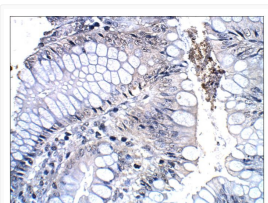
Clonality	Polyclonal
Concentration	0.65 µg/µl
Conjugation	Unconjugated
Purification	Affinity Purified
Dilution Range	WB: 1:500 DB: 1:4, 000 ELISA: 1:4, 000 IP: 1:150 IHC: 1:100
Formulation	Contains Tris, HCl/Glycine buffer pH 7.4-7.8, 30% Glycerol and 0.5% BSA, along with cryo-protective agents, Hepes, and long-term preservatives (0.02% Sodium Azide).
Isotype	IgG
Storage Instruction	Store at -20°C for long term storage. Avoid freeze-thaw cycles.

TARGET INFORMATION

Gene ID	1045
Gene Symbol	CDX2
UniProt ID	CDX2_HUMAN
Immunogen Region	100-200

ADDITIONAL INFORMATION

Note STRICTLY FOR FURTHER SCIENTIFIC RESEARCH USE ONLY (RUO). MUST NOT TO BE USED IN DIAGNOSTIC OR THERAPEUTIC APPLICATIONS.



Immunohistochemistry of baboon Large Intestine with Anti-CDX2 primary antibody (STJ500496) at 1:100 dilution in Buffer. Section was treated with DAB and Haematoxylin stain. Magnification is at 40X.