

Anti-CD19 antibody (200-250) (STJ500432)

GENERAL INFORMATION

Product Type	Primary antibodies
Applications	ELISA/IHC/IP/WB
Host / Source	Rabbit
Reactivity	Human/Mouse/Rat

PRODUCT PROPERTIES

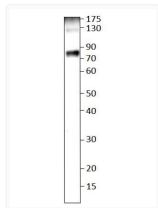
Clonality	Polyclonal
Concentration	0.55-0.75 $\mu\text{g}/\mu\text{l}$
Conjugation	Unconjugated
Purification	Affinity Purified
Dilution Range	WB: 1:500 DB: 1:10, 000 ELISA: 1:10, 000 IP: 1:200 IHC: 1:50-1:150
Formulation	Contains Tris, HCl/Glycine buffer pH 7.4-7.8, 30% Glycerol and 0.5% BSA, along with cryo-protective agents, Hepes, and long-term preservatives (0.02% Sodium Azide).
Isotype	IgG
Storage Instruction	Store at -20°C for long term storage. Avoid freeze-thaw cycles.

TARGET INFORMATION

Gene ID	930
Gene Symbol	CD19
UniProt ID	CD19_HUMAN
Immunogen Region	200-250

ADDITIONAL INFORMATION

Note STRICTLY FOR FURTHER SCIENTIFIC RESEARCH USE ONLY (RUO). MUST NOT TO BE USED IN DIAGNOSTIC OR THERAPEUTIC APPLICATIONS.



Western blot with Anti-CD19 Antibody (STJ500432) with peptide on at 1:500 dilution in buffer.