

Anti-CD163 antibody (887-905) (STJ500424)

GENERAL INFORMATION

Product Type	Primary antibodies
Applications	ELISA/IF/IP/WB
Host / Source	Rabbit
Reactivity	Human/Monkey

PRODUCT PROPERTIES

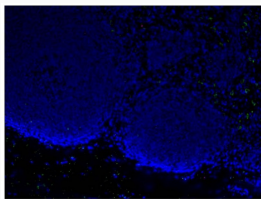
Clonality	Polyclonal
Concentration	0.55-0.75 $\mu\text{g}/\mu\text{l}$
Conjugation	Unconjugated
Purification	Affinity Purified
Dilution Range	WB: 1:500 DB: 1:10, 000 ELISA: 1:10, 000 IP: 1:150 IF: 1:100
Formulation	Contains Tris, HCl/Glycine buffer pH 7.4-7.8, 30% Glycerol and 0.5% BSA, along with cryo-protective agents, Hepes, and long-term preservatives (0.02% Sodium Azide).
Isotype	IgG
Storage Instruction	Store at -20°C for long term storage. Avoid freeze-thaw cycles.

TARGET INFORMATION

Immunogen Region	887-905
------------------	---------

ADDITIONAL INFORMATION

Note STRICTLY FOR FURTHER SCIENTIFIC RESEARCH USE ONLY (RUO). MUST NOT TO BE USED IN DIAGNOSTIC OR THERAPEUTIC APPLICATIONS.



Anti-CD163 Antibody (STJ500424): Rhesus macaque Mesenteric Lymph node- CD163. Primary Antibody: STJ500424, 1:100 dilution. Antigen retrieval reagents: Vector, high pH H3301 and low pH H3300 Secondary Antibody: goat anti-rabbit IgG (H+L) Alexa 488 A11008 (1:1000 dilution). 20X magnification.