

## Anti-CCR7 antibody (STJ500420)

### GENERAL INFORMATION

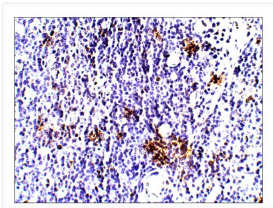
Product Type	Primary antibodies
Applications	CM/DB/ELISA/IF/IHC/IP/WB
Host / Source	Rabbit
Reactivity	Human/Mouse/Rat

### PRODUCT PROPERTIES

Clonality	Polyclonal
Concentration	0.65-1.25 $\mu\text{g}/\mu\text{l}$
Conjugation	Unconjugated
Purification	Affinity Purified
Dilution Range	WB: 1:500 DB: 1:10,000 ELISA: 1:10,000 IHC: 1:250 ICC: 1:250 IF: 1:250 CFM: 1:250
Formulation	Contains Tris, HCl/Glycine buffer pH 7.4-7.8, 30% Glycerol and 0.5% BSA, along with cryo-protective agents, Hepes, and long-term preservatives (0.02% Sodium Azide).
Isotype	IgG
Storage Instruction	Store at -20°C for long term storage. Avoid freeze-thaw cycles.

### ADDITIONAL INFORMATION

Note STRICTLY FOR FURTHER SCIENTIFIC RESEARCH USE ONLY (RUO). MUST NOT TO BE USED IN DIAGNOSTIC OR THERAPEUTIC APPLICATIONS.



Immunohistochemistry of rat tissue with Anti-CCR7 primary antibody (STJ500420) at 1:100 dilution in Buffer. Section was treated with DAB and Haematoxylin stain. Magnification is at 40X.