

## Anti-CCR4 antibody (1-50) (STJ500405)

### GENERAL INFORMATION

|               |                            |
|---------------|----------------------------|
| Product Type  | Primary antibodies         |
| Applications  | CF/DB/ELISA/IF/IHC/IP/WB   |
| Host / Source | Rabbit                     |
| Reactivity    | Cat/Human/Monkey/Mouse/Rat |

### PRODUCT PROPERTIES

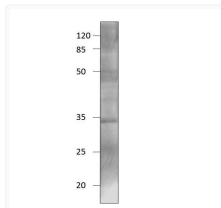
|                     |  |
|---------------------|--|
| Clonality           | Polyclonal   |
| Concentration       | 0.68 µg/µl   |
| Conjugation         | Unconjugated   |
| Purification        | Affinity Purified  |
| Dilution Range      | WB: 1:500<br>IP: 1:250<br>IHC: 1:250<br>ICC: 1:250<br>IF: 1:250<br>CFM: 1:250  |
| Formulation         | Contains Tris, HCl/Glycine buffer pH 7.4-7.8, 30% Glycerol and 0.5% BSA, along with cryo-protective agents, Hepes, and long-term preservatives (0.02% Sodium Azide). |
| Isotype             | IgG  |
| Storage Instruction | Store at -20°C for long term storage. Avoid freeze-thaw cycles.  |

### TARGET INFORMATION

|                  |                            |
|------------------|----------------------------|
| Gene ID          | <a href="#">1233</a>       |
| Gene Symbol      | <a href="#">CCR4</a>       |
| UniProt ID       | <a href="#">CCR4_HUMAN</a> |
| Immunogen Region | 1-50                       |

### ADDITIONAL INFORMATION

Note STRICTLY FOR FURTHER SCIENTIFIC RESEARCH USE ONLY (RUO). MUST NOT TO BE USED IN DIAGNOSTIC OR THERAPEUTIC APPLICATIONS.



Western blot with Anti-CCR4 Antibody (STJ500405) and peptide at 1:250 dilution in buffer on a 14% SDS gel.