

## Anti-CCR3 antibody (1-50) (STJ500402)

### GENERAL INFORMATION

Product Type	Primary antibodies
Applications	ELISA/IHC/IP/WB
Host / Source	Rabbit
Reactivity	Human/Monkey

### PRODUCT PROPERTIES

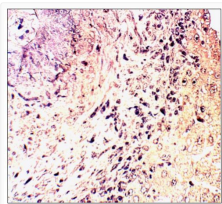
Clonality	Polyclonal
Concentration	0.60-0.70 $\mu\text{g}/\mu\text{l}$
Conjugation	Unconjugated
Purification	Affinity Purified
Dilution Range	WB: 1:500 DB: 1:10, 000 ELISA: 1:10, 000 IP: 1:200 IHC: 1:100
Formulation	Contains Tris, HCl/Glycine buffer pH 7.4-7.8, 30% Glycerol and 0.5% BSA, along with cryo-protective agents, Hepes, and long-term preservatives (0.02% Sodium Azide).
Isotype	IgG
Storage Instruction	Store at -20°C for long term storage. Avoid freeze-thaw cycles.

### TARGET INFORMATION

Gene ID	<a href="#">1232</a>
Gene Symbol	<a href="#">CCR3</a>
UniProt ID	<a href="#">CCR3_HUMAN</a>
Immunogen Region	1-50

### ADDITIONAL INFORMATION

Note STRICTLY FOR FURTHER SCIENTIFIC RESEARCH USE ONLY (RUO). MUST NOT TO BE USED IN DIAGNOSTIC OR THERAPEUTIC APPLICATIONS.



Immunohistochemistry of baboon liver with Anti-CCR3 primary antibody (STJ500402) at 1:100 dilution in Buffer. Section was treated with DAB and Haematoxylin stain.