

Anti-BEST4 antibody (400-500) (STJ500237)

GENERAL INFORMATION

Product Type	Primary antibodies
Applications	ELISA/IP/WB
Host / Source	Rabbit
Reactivity	Human

PRODUCT PROPERTIES

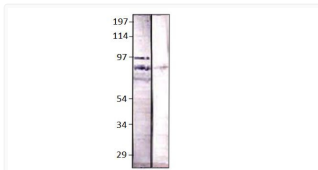
Clonality	Polyclonal
Concentration	0.75-1.20 $\mu\text{g}/\mu\text{l}$
Conjugation	Unconjugated
Purification	Affinity Purified
Dilution Range	WB: 1:500-1:1,000 DB: 1:2,000 ELISA: 1:2,000 IP: 1:200
Formulation	Contains Tris, HCl/Glycine buffer pH 7.4-7.8, 30% Glycerol and 0.5% BSA, along with cryo-protective agents, Hepes, and long-term preservatives (0.02% Sodium Azide).
Isotype	IgG
Storage Instruction	Store at -20°C for long term storage. Avoid freeze-thaw cycles.

TARGET INFORMATION

Gene ID	266675
Gene Symbol	BEST4
UniProt ID	BEST4_HUMAN
Immunogen Region	400-500

ADDITIONAL INFORMATION

Note STRICTLY FOR FURTHER SCIENTIFIC RESEARCH USE ONLY (RUO). MUST NOT TO BE USED IN DIAGNOSTIC OR THERAPEUTIC APPLICATIONS.



Western blot with Anti-BEST4 Antibody (STJ500237) with peptide on at dilution in buffer. Lane 1: Pre-immune serum, Lane 2: Affinity purified primary antibody