

Anti-5HT1A antibody (200-250) {FITC} (STJ500002)

GENERAL INFORMATION

Product Type	Primary antibodies
Applications	ELISA/IP/WB
Host / Source	Rabbit
Reactivity	Human/Mouse/Rat

PRODUCT PROPERTIES

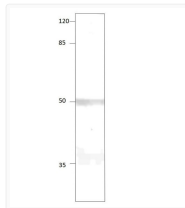
Clonality	Polyclonal
Concentration	0.5-1.5 $\mu\text{g}/\mu\text{l}$
Conjugation	FITC
Purification	Affinity Purified
Dilution Range	WB: 1:2, 500-1:5, 000 DB: 1:50, 000 ELISA: 1:50, 000 IP: 1:200
Formulation	Contains Tris, HCl/Glycine buffer pH 7.4-7.8, 30% Glycerol and 0.5% BSA, along with cryo-protective agents, Hepes, and long-term preservatives (0.02% Sodium Azide).
Isotype	IgG
Storage Instruction	Store at -20°C for long term storage. Avoid freeze-thaw cycles.

TARGET INFORMATION

Gene ID	24473
Gene Symbol	Htr1a
UniProt ID	5HT1A_RAT
Immunogen Region	200-250

ADDITIONAL INFORMATION

Note STRICTLY FOR FURTHER SCIENTIFIC RESEARCH USE ONLY (RUO). MUST NOT TO BE USED IN DIAGNOSTIC OR THERAPEUTIC APPLICATIONS.



Western blot with Anti-5HT1A Antibody (STJ500000) of rat cortex at 1:250 dilution in buffer on a 14% SDS gel.