

Anti-CACNB1 antibody (429-598) (STJ29963)

GENERAL INFORMATION

Product Type	Primary antibodies
Applications	WB/ELISA
Host / Source	Rabbit
Reactivity	Human/Mouse/Rat

PRODUCT PROPERTIES

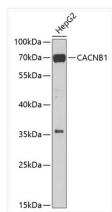
Clonality	Polyclonal
Concentration	Lot specific
Conjugation	Unconjugated
Purification	Affinity purification
Dilution Range	WB:1:500-1:2000 ELISA:Recommended starting concentration is 1 µg/mL. Please optimize the concentration based on your specific assay requirements.
Formulation	PBS with 0.02% Sodium Azide, 50% Glycerol, pH 7.3.
Isotype	IgG
Molecular Weight	Protein Mw: 66kDa Observed Mw: 66kDa
Storage Instruction	Store at -20°C for up to 1 year from the date of receipt, and avoid repeat freeze-thaw cycles.

TARGET INFORMATION

Gene ID	782
Gene Symbol	CACNB1
UniProt ID	CACB1_HUMAN
Immunogen Region	429-598
Immunogen Sequence	ATAALAASPAPVSNLQGPYL ASGDQPLERATGEHASMHEY PGELGQPPGLYPSSHPPGRA GTLRALSRQDTFDADTPGSR NSAYTELGDCVDMETDPSE GPGLGDPAGGGTTPPARQGSW EDEEEDYEEELTDNRNRGRN KARYCAEGGGPVLGRNKNEL EGWGRGVYIR
Specificity	Recombinant fusion protein containing a sequence corresponding to amino acids 429-598 of human CACNB1 (NP_000714.3).

ADDITIONAL INFORMATION

Note STRICTLY FOR FURTHER SCIENTIFIC RESEARCH USE ONLY (RUO). MUST NOT TO BE USED IN DIAGNOSTIC OR THERAPEUTIC APPLICATIONS.



Western blot analysis of extracts of HepG2 cells, using CACNB1 Antibody (STJ29963) at 1:1000 dilution. Secondary antibody: HRP Goat Anti-Rabbit IgG (H+L) (STJS000856) at 1:10000 dilution. Lysates/proteins: 25 µg per lane. Blocking buffer: 3% nonfat dry milk in TBST. Detection: ECL Basic Kit. Exposure time: 30s.