

Anti-BCS1L antibody (33-240) (STJ29961)

GENERAL INFORMATION

Product Type	Primary antibodies
Applications	WB/IHC-P/IF/ICC/ELISA
Host / Source	Rabbit
Reactivity	Human/Mouse/Rat

PRODUCT PROPERTIES

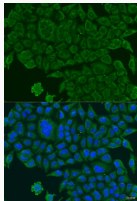
Clonality	Polyclonal
Concentration	Lot specific
Conjugation	Unconjugated
Purification	Affinity purification
Dilution Range	WB:1:500-1:2000 IHC-P:1:50-1:200 IF/ICC:1:50-1:200 ELISA:Recommended starting concentration is 1 µg/mL. Please optimize the concentration based on your specific assay requirements.
Formulation	PBS with 0.02% Sodium Azide, 50% Glycerol, pH 7.3.
Isotype	IgG
Molecular Weight	Protein Mw: 48kDa Observed Mw: 48kDa
Storage Instruction	Store at -20°C for up to 1 year from the date of receipt, and avoid repeat freeze-thaw cycles.

TARGET INFORMATION

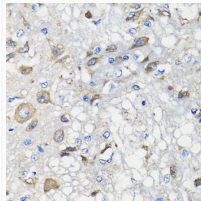
Gene ID	617
Gene Symbol	BCS1L
UniProt ID	BCS1_HUMAN
Immunogen Region	33-240
Immunogen Sequence	RKGVQLGLVAFRRHYMITLE VPARDRSYAWLLSWLTRHST RTQHLSVETSYLQHESGRIS TKFEFVPSPGNHFVYRGKW IRVERSREMOMIDLQTGTPW ESVFTALGTDKRVFFNILE EARELALQEEGKTVMYTAV GSEWRPFGYPRRRRPLNSVV LQQGLADRIVRDVQEFIDNP KWYTDRGIPYRRGYLLYGPP GCGKSSF
Specificity	Recombinant fusion protein containing a sequence corresponding to amino acids 33-240 of human BCS1L (NP_004319.1).

ADDITIONAL INFORMATION

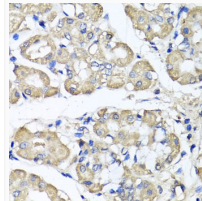
Note **STRICTLY FOR FURTHER SCIENTIFIC RESEARCH USE ONLY (RUO). MUST NOT TO BE USED IN DIAGNOSTIC OR THERAPEUTIC APPLICATIONS.**



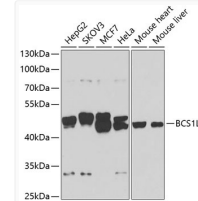
Immunofluorescence analysis of U2OS cells using BCS1L antibody (STJ29961) at dilution of 1:100. Blue: DAPI for nuclear staining.



Immunohistochemistry analysis of paraffin-embedded rat brain using BCS1L antibody (STJ29961) at dilution of 1:100 (40x lens). Perform microwave antigen retrieval with 10 mM PBS buffer pH 7.2 before commencing with immunohistochemistry staining protocol.



Immunohistochemistry analysis of paraffin-embedded human stomach using BCS1L antibody (STJ29961) at dilution of 1:100 (40x lens). Perform microwave antigen retrieval with 10 mM PBS buffer pH 7.2 before commencing with immunohistochemistry staining protocol.



Western blot analysis of extracts of various cell lines, using BCS1L antibody (STJ29961) at 1:1000 dilution. Secondary antibody: HRP Goat Anti-Rabbit IgG (H+L) (STJS000856) at 1:10000 dilution. Lysates/proteins: 25 µg per lane. Blocking buffer: 3% nonfat dry milk in TBST. Detection: ECL Basic Kit. Exposure time: 30s.