

Anti-TXN antibody (2-105) (STJ29953)

GENERAL INFORMATION

Product Type	Primary antibodies
Applications	WB/IHC-P/IF/ICC/IP/ELISA
Host / Source	Rabbit
Reactivity	Human/Mouse

PRODUCT PROPERTIES

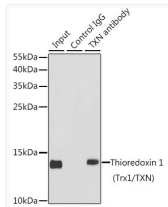
Clonality	Polyclonal
Concentration	Lot specific
Conjugation	Unconjugated
Purification	Affinity purification
Dilution Range	WB:1:500-1:2000 IHC-P:1:100-1:500 IF/CC:1:50-1:200 IP:0.5 Mu g-4 Mu g antibody for 200 Mu g-400 Mu g extracts of whole cells ELISA:Recommended starting concentration is 1 Mu g/mL. Please optimize the concentration based on your speci
Formulation	PBS with 0.02% Sodium Azide, 50% Glycerol, pH 7.3.
Isotype	IgG
Molecular Weight	Protein Mw: 12kDa Observed Mw: 12kDa
Storage Instruction	Store at -20°C for up to 1 year from the date of receipt, and avoid repeat freeze-thaw cycles.

TARGET INFORMATION

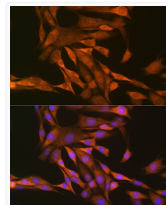
Gene ID	7295
Gene Symbol	TXN
UniProt ID	THIO_HUMAN
Immunogen Region	2-105
Immunogen Sequence	VKQIESKTAFOEALDAAGDK LVVVDFSATWCGPCKMIKPF FHSLSEKYSNVIFLEVDVDD CQDVASECEVKCMPTFQFFK KGQKVGEGFSGANKEKLEATI NELV
Specificity	A synthetic peptide corresponding to a sequence within amino acids 2-105 of human Trx1/Thioredoxin 1 (Trx1/TXN) (NP_003320.2).

ADDITIONAL INFORMATION

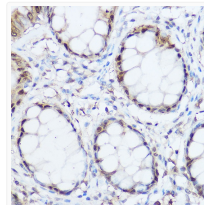
Note STRICTLY FOR FURTHER SCIENTIFIC RESEARCH USE ONLY (RUO). MUST NOT TO BE USED IN DIAGNOSTIC OR THERAPEUTIC APPLICATIONS.



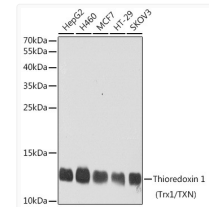
Immunoprecipitation analysis of 150 Mu g extracts of MCF7 cells using 3 Mu g Thioredoxin 1 (Trx1/Thioredoxin 1 (Trx1/TXN)) antibody (STJ29953). Western blot was performed from the immunoprecipitate using Thioredoxin 1 (Trx1/Thioredoxin 1 (Trx1/TXN)) antibody (STJ29953) at a dilution of 1:500.



Immunofluorescence analysis of NIH-3T3 cells using Thioredoxin 1 (Trx1/Thioredoxin 1 (Trx1/TXN)) Rabbit polyclonal antibody (STJ29953) at dilution of 1:100 (40x lens). Secondary antibody: Cy3 Goat Anti-Rabbit IgG (H+L) at 1:500 dilution. Blue: DAPI for nuclear staining.



Immunohistochemistry analysis of Thioredoxin 1 (Trx1/TXN) in paraffin-embedded human colon using Thioredoxin 1 (Trx1/Thioredoxin 1 (Trx1/TXN)) Rabbit polyclonal antibody (STJ29953) at dilution of 1:300 (40x lens). Perform high pressure antigen retrieval with 10 mM citrate buffer pH 6.0 before commencing with immunohistochemistry staining protocol.



Western blot analysis of various lysates using Thioredoxin 1 (Trx1/TXN) Rabbit polyclonal antibody (STJ29953) at 1:1000 dilution. Secondary antibody: HRP Goat Anti-Rabbit IgG (H+L) (STJS000856) at 1:10000 dilution. Lysates/proteins: 25 Mu g per lane. Blocking buffer: 3% nonfat dry milk in TBST. Detection: ECL Basic Kit. Exposure time: 90s.