

Anti-GLUD1 antibody (54-242) (STJ29946)

GENERAL INFORMATION

Product Type	Primary antibodies
Applications	WB/IHC-P/IF/ICC/IP/ELISA
Host / Source	Rabbit
Reactivity	Human/Mouse/Rat

PRODUCT PROPERTIES

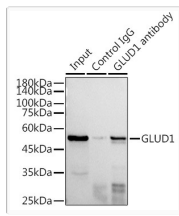
Clonality	Polyclonal
Concentration	Lot specific
Conjugation	Unconjugated
Purification	Affinity purification
Dilution Range	WB:1:500-1:1000 IHC-P:1:50-1:200 IF/CC:1:50-1:200 IP:0.5 Mu g-4 Mu g antibody for 200 Mu g-400 Mu g extracts of whole cells ELISA:Recommended starting concentration is 1 Mu g/mL. Please optimize the concentration based on your specif
Formulation	PBS with 0.09% Sodium Azide, 50% Glycerol, pH 7.3.
Isotype	IgG
Molecular Weight	Protein Mw: 61kDa Observed Mw: 52kDa
Storage Instruction	Store at-20°C for up to 1 year from the date of receipt, and avoid repeat freeze-thaw cycles.

TARGET INFORMATION

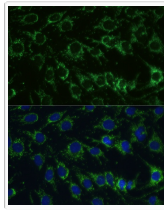
Gene ID	2746
Gene Symbol	GLUD1
UniProt ID	DHE3_HUMAN
Immunogen Region	54-242
Immunogen Sequence	SEAVADREDDPNFFKMVEGF FDRGASIVEDKLVEDLRTRE SEEQKRNRVVRGILRIIKPCN HVLSLSFPIRRDDGSWEVIE GYRAQHSQHRTPCKGGIRYS TDVSVDEVKALASLMTYKCA VVDVFPFGGAKAGVKINPKNY TDNELEKITRRFTMELAKKG FIGPGIDVVPAPDMSTGEREM SWIADTYAS
Specificity	Recombinant fusion protein containing a sequence corresponding to amino acids 54-242 of human GLUD1 (NP_005262.1).

ADDITIONAL INFORMATION

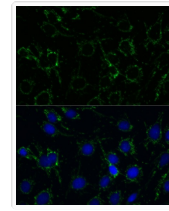
Note	STRICTLY FOR FURTHER SCIENTIFIC RESEARCH USE ONLY (RUO). MUST NOT TO BE USED IN DIAGNOSTIC OR THERAPEUTIC APPLICATIONS.
------	---



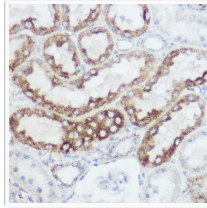
Immunoprecipitation analysis of 300 μ g extracts of HepG2 cells using 3 μ g GLUD1 antibody (STJ29946). Western blot was performed from the immunoprecipitate using GLUD1 antibody (STJ29946) at a dilution of 1:1000.



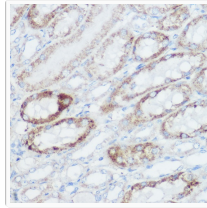
Immunofluorescence analysis of NIH-3T3 cells using GLUD1 Rabbit polyclonal antibody (STJ29946) at dilution of 1:100. Secondary antibody: Cy3 Goat Anti-Rabbit IgG (H+L) at 1:500 dilution. Blue: DAPI for nuclear staining.



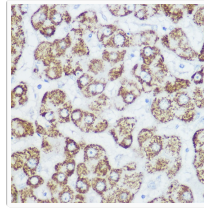
Immunofluorescence analysis of C6 cells using GLUD1 Rabbit polyclonal antibody (STJ29946) at dilution of 1:100. Secondary antibody: Cy3 Goat Anti-Rabbit IgG (H+L) at 1:500 dilution. Blue: DAPI for nuclear staining.



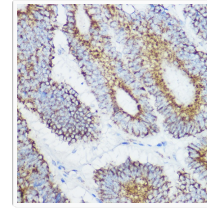
Immunohistochemistry analysis of GLUD1 in paraffin-embedded rat kidney using GLUD1 Rabbit polyclonal antibody (STJ29946) at dilution of 1:100 (40x lens). Perform high pressure antigen retrieval with 10 mM citrate buffer pH 6.0 before commencing with immunohistochemistry staining protocol.



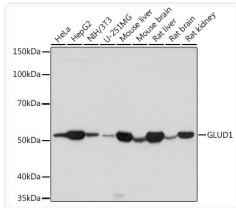
Immunohistochemistry analysis of GLUD1 in paraffin-embedded mouse kidney using GLUD1 Rabbit polyclonal antibody (STJ29946) at dilution of 1:100 (40x lens). Perform high pressure antigen retrieval with 10 mM citrate buffer pH 6.0 before commencing with immunohistochemistry staining protocol.



Immunohistochemistry analysis of GLUD1 in paraffin-embedded human liver using GLUD1 Rabbit polyclonal antibody (STJ29946) at dilution of 1:100 (40x lens). Perform high pressure antigen retrieval with 10 mM citrate buffer pH 6.0 before commencing with immunohistochemistry staining protocol.



Immunohistochemistry analysis of GLUD1 in paraffin-embedded human colon carcinoma using GLUD1 Rabbit polyclonal antibody (STJ29946) at dilution of 1:100 (40x lens). Perform high pressure antigen retrieval with 10 mM citrate buffer pH 6.0 before commencing with immunohistochemistry staining protocol.



Western blot analysis of various lysates using GLUD1 Rabbit polyclonal antibody (STJ29946) at 1:1000 dilution. Secondary antibody: HRP Goat Anti-Rabbit IgG (H+L) (STJS000856) at 1:10000 dilution. Lysates/proteins: 25 μ g per lane. Blocking buffer: 3% nonfat dry milk in TBST. Detection: ECL Basic Kit. Exposure time: 10s.