

Anti-KHDRBS1 antibody (343-443) (STJ29932)

GENERAL INFORMATION

Product Type	Primary antibodies
Applications	WB/IHC-P/IF/ICC/ELISA
Host / Source	Rabbit
Reactivity	Human/Mouse/Rat

PRODUCT PROPERTIES

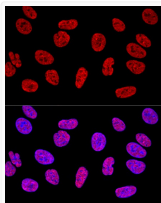
Clonality	Polyclonal
Concentration	Lot specific
Conjugation	Unconjugated
Purification	Affinity purification
Dilution Range	WB:1:500-1:2000 IHC-P:1:100-1:200 IF/ICC:1:50-1:200 ELISA:Recommended starting concentration is 1 μ g/mL. Please optimize the concentration based on your specific assay requirements.
Formulation	PBS with 0.02% Sodium Azide, 50% Glycerol, pH 7.3.
Isotype	IgG
Molecular Weight	Protein Mw: 48kDa Observed Mw: 68kDa
Storage Instruction	Store at -20°C for up to 1 year from the date of receipt, and avoid repeat freeze-thaw cycles.

TARGET INFORMATION

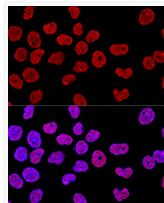
Gene ID	10657
Gene Symbol	KHDRBS1
UniProt ID	KHDR1_HUMAN
Immunogen Region	343-443
Immunogen Sequence	PAPRARTAGIQRIPLPPPPA PETEYEEYGYDDTYAEQSYEG YEGYYSQSQGDSEYYDYGHG EVQDSYEAYGQDDWNGTRPS LKAPPARPVKGAYREHPYGR Y
Specificity	A synthetic peptide corresponding to a sequence within amino acids 343-443 of human KHDRBS1/Sam68 (NP_006550.1).

ADDITIONAL INFORMATION

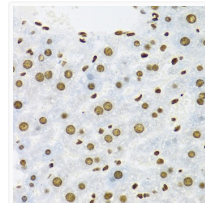
Note STRICTLY FOR FURTHER SCIENTIFIC RESEARCH USE ONLY (RUO). MUST NOT TO BE USED IN DIAGNOSTIC OR THERAPEUTIC APPLICATIONS.



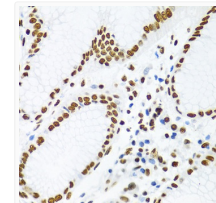
Confocal immunofluorescence analysis of U2OS cells using KHDRBS1/Sam68 Polyclonal Antibody (STJ29932) at dilution of 1:400. Blue: DAPI for nuclear staining.



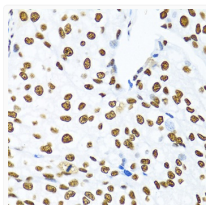
Confocal immunofluorescence analysis of HeLa cells using KHDRBS1/Sam68 Polyclonal Antibody (STJ29932) at dilution of 1:400. Blue: DAPI for nuclear staining.



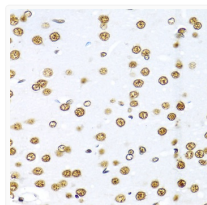
Immunohistochemistry analysis of paraffin-embedded mouse liver using KHDRBS1/Sam68 antibody (STJ29932) at dilution of 1:100 (40x lens). Perform microwave antigen retrieval with 10 mM PBS buffer pH 7.2 before commencing with immunohistochemistry staining protocol.



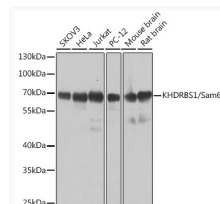
Immunohistochemistry analysis of paraffin-embedded human stomach using KHDRBS1/Sam68 antibody (STJ29932) at dilution of 1:100 (40x lens). Perform microwave antigen retrieval with 10 mM PBS buffer pH 7.2 before commencing with immunohistochemistry staining protocol.



Immunohistochemistry analysis of paraffin-embedded human prostate cancer using KHDRBS1/Sam68 antibody (STJ29932) at dilution of 1:100 (40x lens). Perform microwave antigen retrieval with 10 mM PBS buffer pH 7.2 before commencing with immunohistochemistry staining protocol.



Immunohistochemistry analysis of paraffin-embedded rat brain using KHDRBS1/Sam68 antibody (STJ29932) at dilution of 1:100 (40x lens). Perform microwave antigen retrieval with 10 mM PBS buffer pH 7.2 before commencing with immunohistochemistry staining protocol.



Western blot analysis of extracts of various cell lines, using KHDRBS1/Sam68 antibody (STJ29932) at 1:1000 dilution. Secondary antibody: HRP Goat Anti-Rabbit IgG (H+L) (STJS000856) at 1:10000 dilution. Lysates/proteins: 25 μ g per lane. Blocking buffer: 3% nonfat dry milk in TBST. Detection: ECL Basic Kit. Exposure time: 10s.