

Anti-ELAVL3 antibody (209-224) (STJ29931)

GENERAL INFORMATION

Product Type	Primary antibodies
Applications	WB/IHC-P/IF/ICC/ELISA
Host / Source	Rabbit
Reactivity	Human/Mouse/Rat

PRODUCT PROPERTIES

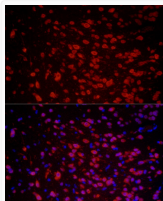
Clonality	Polyclonal
Concentration	Lot specific
Conjugation	Unconjugated
Purification	Affinity purification
Dilution Range	WB:1:500-1:1000 IHC-P:1:50-1:200 IF/ICC:1:50-1:200 ELISA:Recommended starting concentration is 1 μ g/mL. Please optimize the concentration based on your specific assay requirements.
Formulation	PBS with 0.02% Sodium Azide, 50% Glycerol, pH 7.3.
Isotype	IgG
Molecular Weight	Protein Mw: 40kDa Observed Mw: 37kDa
Storage Instruction	Store at -20°C for up to 1 year from the date of receipt, and avoid repeat freeze-thaw cycles.

TARGET INFORMATION

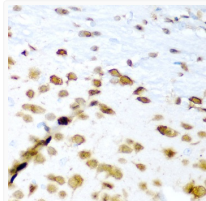
Gene ID	1995
Gene Symbol	ELAVL3
UniProt ID	ELAV3_HUMAN
Immunogen Region	209-224
Immunogen Sequence	VTGVSRRGVGFIRFDKRIEAE EAIKGLNGQKPLGAAEPITV KFANNPSQKTGQALLTHLYQ SSARRYAGPLHHQTQRFRLD NLLNMAYGVKSPLSLIARFS PIAIDGMSGLAGVGLSGGAA GAGWCIFVYNLSPEADESVL WQLFGPFGAVTNVKVIRDFT TNKCKGFGFVMTNRYDEAAM AIASLNGYRLGERVLQVSFK TSKQHKA
Specificity	A synthetic peptide corresponding to a sequence within amino acids 161-260 of human ELAVL3 (NP_001411.2).

ADDITIONAL INFORMATION

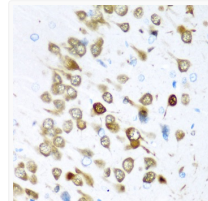
Note **STRICTLY FOR FURTHER SCIENTIFIC RESEARCH USE ONLY (RUO). MUST NOT TO BE USED IN DIAGNOSTIC OR THERAPEUTIC APPLICATIONS.**



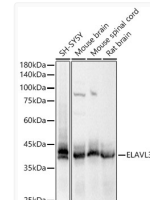
Immunofluorescence analysis of paraffin-embedded mouse brain using ELAVL3 Rabbit polyclonal antibody (STJ29931) at dilution of 1:50 (40x lens). Secondary antibody: Cy3 Goat Anti-Rabbit IgG (H+L) at 1:500 dilution. Blue: DAPI for nuclear staining.



Immunohistochemistry analysis of ELAVL3 in paraffin-embedded mouse brain using ELAVL3 Rabbit polyclonal antibody (STJ29931) at dilution of 1:200 (40x lens). Perform microwave antigen retrieval with 10 mM PBS buffer pH 7.2 before commencing with immunohistochemistry staining protocol.



Immunohistochemistry analysis of ELAVL3 in paraffin-embedded rat brain using ELAVL3 Rabbit polyclonal antibody (STJ29931) at dilution of 1:200 (40x lens). Perform microwave antigen retrieval with 10 mM PBS buffer pH 7.2 before commencing with immunohistochemistry staining protocol.



Western blot analysis of various lysates, using ELAVL3 Rabbit polyclonal antibody (STJ29931) at 1:500 dilution. Secondary antibody: HRP Goat Anti-Rabbit IgG (H+L) (STJS000856) at 1:10000 dilution. Lysates/proteins: 25 μ g per lane. Blocking buffer: 3% nonfat dry milk in TBST. Detection: ECL Basic Kit. Exposure time: 0.8s.