

Anti-EIF4A2 antibody (1-270) (STJ29906)

GENERAL INFORMATION

Product Type	Primary antibodies
Applications	WB/ELISA
Host / Source	Rabbit
Reactivity	Human/Mouse/Rat

PRODUCT PROPERTIES

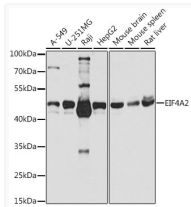
Clonality	Polyclonal
Concentration	Lot specific
Conjugation	Unconjugated
Purification	Affinity purification
Dilution Range	WB:1:500-1:1000 ELISA:Recommended starting concentration is 1 μ g/mL. Please optimize the concentration based on your specific assay requirements.
Formulation	PBS with 0.02% Sodium Azide, 50% Glycerol, pH 7.3.
Isotype	IgG
Molecular Weight	Protein Mw: 46kDa Observed Mw: 46kDa
Storage Instruction	Store at -20°C for up to 1 year from the date of receipt, and avoid repeat freeze-thaw cycles.

TARGET INFORMATION

Gene ID	1974
Gene Symbol	EIF4A2
UniProt ID	IF4A2_HUMAN
Immunogen Region	1-270
Immunogen Sequence	MSGGSADYNREHGGPEGMDP DGVIESNWNEIVDNFDDMNL KESLLRGIYAYGFKEKPSAIQ QRAIIPCIGYDVIAQAQSG TGKTATFAISILQQLEIEFK ETQALVLAPTRELAQQIQKV ILALGDYMGATCHACIGGTN VRNEMQKLQAEAPHIVVGTG GRVFDMLNRRYLSPKWIKMF VLDEADEMLSRGFKDQIYEI FQKLNTSIQVLLSATMPTD VLEVTKKFMRDPIRILVKK
Specificity	Recombinant fusion protein containing a sequence corresponding to amino acids 1-270 of human EIF4A2 (NP_001958.2).

ADDITIONAL INFORMATION

Note STRICTLY FOR FURTHER SCIENTIFIC RESEARCH USE ONLY (RUO). MUST NOT TO BE USED IN DIAGNOSTIC OR THERAPEUTIC APPLICATIONS.



Western blot analysis of extracts of various cell lines, using EIF4A2 antibody (STJ29906) at 1:1000 dilution. Secondary antibody: HRP Goat Anti-Rabbit IgG (H+L) (STJS000856) at 1:10000 dilution. Lysates/proteins: 25 μ g per lane. Blocking buffer: 3% nonfat dry milk in TBST. Detection: ECL Basic Kit. Exposure time: 10s.