

Anti-LAMTOR5 antibody (1-173) (STJ29891)

GENERAL INFORMATION

Product Type	Primary antibodies
Applications	WB/IF/ICC/ELISA
Host / Source	Rabbit
Reactivity	Human/Mouse/Rat

PRODUCT PROPERTIES

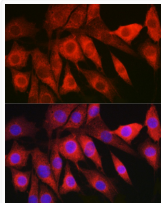
Clonality	Polyclonal
Concentration	Lot specific
Conjugation	Unconjugated
Purification	Affinity purification
Dilution Range	WB:1:500-1:1000 IF/ICC:1:50-1:200 ELISA:Recommended starting concentration is 1 Mu g/mL. Please optimize the concentration based on your specific assay requirements.
Formulation	PBS with 0.02% Sodium Azide, 50% Glycerol, pH 7.3.
Isotype	IgG
Molecular Weight	Protein Mw: 10kDa Observed Mw: 10kDa
Storage Instruction	Store at -20°C for up to 1 year from the date of receipt, and avoid repeat freeze-thaw cycles.

TARGET INFORMATION

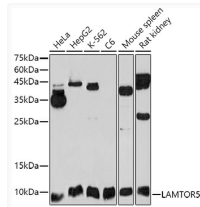
Gene ID	10542
Gene Symbol	LAMTOR5
UniProt ID	LTOR5_HUMAN
Immunogen Region	1-173
Immunogen Sequence	MEPGAGHLDGHRAGSPSLRQ ALCDGSAVMFSSKERGRCTV INFVPLEAPLRSTPRSRQVT EACGGEGRAVPLGSEPEWSV GGMEATLEQHLEDTMKNPSI VGVLC TDSQGLNLGCRGTL S DEHAGVISVLAQQA AKLTSD PTDIPVVCLESDNGNIMIQK HDGITVAVHKMAS
Specificity	Recombinant fusion protein containing a sequence corresponding to amino acids 1-173 of human LAMTOR5 (NP_006393.2).

ADDITIONAL INFORMATION

Note **STRICTLY FOR FURTHER SCIENTIFIC RESEARCH USE ONLY (RUO). MUST NOT TO BE USED IN DIAGNOSTIC OR THERAPEUTIC APPLICATIONS.**



Immunofluorescence analysis of NIH/3T3 cells using LAMTOR5 Rabbit polyclonal antibody (STJ29891) at dilution of 1:200 (40x lens). Blue: DAPI for nuclear staining.



Western blot analysis of extracts of various cell lines, using (STJ29891) at 1:1000 dilution. Secondary antibody: HRP Goat Anti-Rabbit IgG (H+L) (STJS000856) at 1:10000 dilution. Lysates/proteins: 25 Mu g per lane. Blocking buffer: 3% nonfat dry milk in TBST. Detection: ECL Basic Kit. Exposure time: 90s.