

Anti-PTEN antibody (190-304) (STJ29874)

GENERAL INFORMATION

Product Type	Primary antibodies
Applications	IHC-P/IF/ICC/ELISA
Host / Source	Rabbit
Reactivity	Human/Mouse/Rat

PRODUCT PROPERTIES

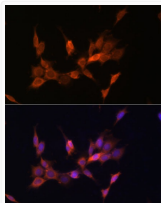
Clonality	Polyclonal
Concentration	Lot specific
Conjugation	Unconjugated
Purification	Affinity purification
Dilution Range	IHC-P:1:50-1:200 IF/CC:1:50-1:200 ELISA:Recommended starting concentration is 1 µg/mL. Please optimize the concentration based on your specific assay requirements.
Formulation	PBS with 0.02% Sodium Azide, 50% Glycerol, pH 7.3.
Isotype	IgG
Molecular Weight	Protein Mw: 47kDa Observed Mw:
Storage Instruction	Store at -20°C for up to 1 year from the date of receipt, and avoid repeat freeze-thaw cycles.

TARGET INFORMATION

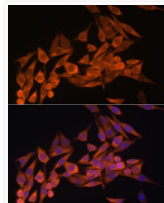
Gene ID	5728
Gene Symbol	PTEN
UniProt ID	PTEN_HUMAN
Immunogen Region	190-304
Immunogen Sequence	PVALLFHKMMFETIPMFSGG TCNPQFVVCQLKVKIYSSNS GPTRREDKFMFYFEPQPLPV CGDIKVEFFHKQNKMLKKDK MFHFVWNTFFIPGPEETSEK VENGSLCDQEIDSIC
Specificity	Recombinant fusion protein containing a sequence corresponding to amino acids 190-304 of human PTEN (NP_000305.3).

ADDITIONAL INFORMATION

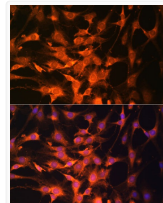
Note **STRICTLY FOR FURTHER SCIENTIFIC RESEARCH USE ONLY (RUO). MUST NOT TO BE USED IN DIAGNOSTIC OR THERAPEUTIC APPLICATIONS.**



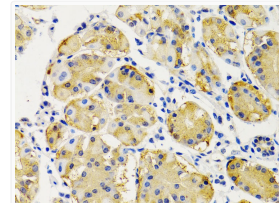
Immunofluorescence analysis of NIH/3T3 cells using PTEN antibody (STJ29874) at dilution of 1:100. Blue: DAPI for nuclear staining.



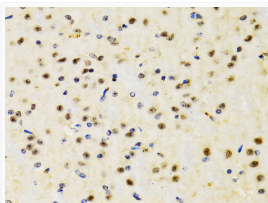
Immunofluorescence analysis of HeLa cells using PTEN antibody (STJ29874) at dilution of 1:100. Blue: DAPI for nuclear staining.



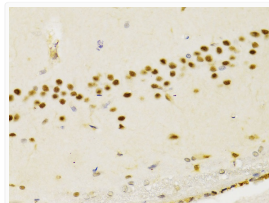
Immunofluorescence analysis of C6 cells using PTEN antibody (STJ29874) at dilution of 1:100. Blue: DAPI for nuclear staining.



Immunohistochemistry analysis of paraffin-embedded human stomach using PTEN antibody (STJ29874) at dilution of 1:200 (40x lens). Perform microwave antigen retrieval with 10 mM PBS buffer pH 7.2 before commencing with immunohistochemistry staining protocol.



Immunohistochemistry analysis of paraffin-embedded mouse brain using PTEN antibody (STJ29874) at dilution of 1:200 (40x lens). Perform microwave antigen retrieval with 10 mM PBS buffer pH 7.2 before commencing with immunohistochemistry staining protocol.



Immunohistochemistry analysis of paraffin-embedded rat brain using PTEN antibody (STJ29874) at dilution of 1:200 (40x lens). Perform microwave antigen retrieval with 10 mM PBS buffer pH 7.2 before commencing with immunohistochemistry staining protocol.