

Anti-TNFRSF11B antibody (22-280) (STJ29873)

GENERAL INFORMATION

Product Type	Primary antibodies
Applications	WB/IHC-P/IF/ICC/ELISA
Host / Source	Rabbit
Reactivity	Human/Mouse/Rat

PRODUCT PROPERTIES

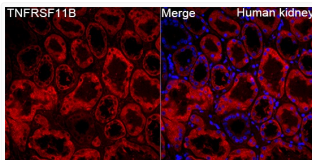
Clonality	Polyclonal
Concentration	Lot specific
Conjugation	Unconjugated
Purification	Affinity purification
Dilution Range	WB:1:500-1:1000 IHC-P:1:50-1:200 IF/ICC:1:50-1:200 ELISA:Recommended starting concentration is 1 μ g/mL. Please optimize the concentration based on your specific assay requirements.
Formulation	PBS with 0.05% Proclin300, 50% Glycerol, pH 7.3.
Isotype	IgG
Molecular Weight	Protein Mw: 46kDa Observed Mw: 48kDa
Storage Instruction	Store at -20°C for up to 1 year from the date of receipt, and avoid repeat freeze-thaw cycles.

TARGET INFORMATION

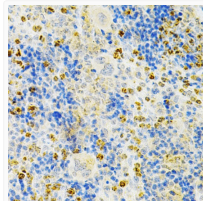
Gene ID	4982
Gene Symbol	TNFRSF11B
UniProt ID	TR11B_HUMAN
Immunogen Region	22-280
Immunogen Sequence	ETFPKYLHYDEETSHQLLC DKGPPGTYLKQHCTAKWKTV CAPCPDHYHYTDSWHTSDECL YCSPVCKELQYVKQECNRTH NRVCECKEGRYLEIEFCLKH RSCPPGFGVVQAGTPERNTV CKRCPDGFFSNETSSKAPCR KHTNCSVFLGLLLTQKGNATH DNICSGNSESTQKCGIDVTL CEEAFFRFAVPTKFTPNWLS VLVDNLPGTKVNAESVERIK RQHSSQEQTQQLLKLWKHQ
Specificity	Recombinant fusion protein containing a sequence corresponding to amino acids 22-280 of human TNFRSF11B (NP_002537.3).

ADDITIONAL INFORMATION

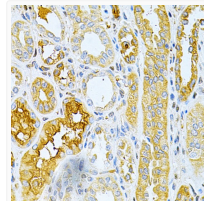
Note STRICTLY FOR FURTHER SCIENTIFIC RESEARCH USE ONLY (RUO). MUST NOT TO BE USED IN DIAGNOSTIC OR THERAPEUTIC APPLICATIONS.



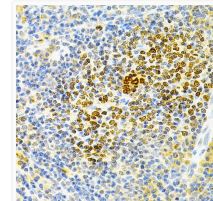
Immunofluorescence analysis of paraffin-embedded human kidney tissue using TNFRSF11B Rabbit polyclonal antibody (STJ29873) at a dilution of 1:200 (40x lens). Secondary antibody: Cy3 Goat Anti-Rabbit IgG (H+L) at 1:500 dilution. Blue: DAPI for nuclear staining. Perform high pressure antigen retrieval with 0.01 M citrate buffer (pH 6.0) prior to IF staining.



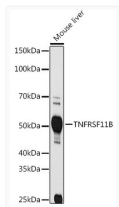
Immunohistochemistry analysis of TNFRSF11B in paraffin-embedded mouse spleen using TNFRSF11B Rabbit polyclonal antibody (STJ29873) at dilution of 1:200 (40x lens). Perform microwave antigen retrieval with 10 mM PBS buffer pH 7.2 before commencing with immunohistochemistry staining protocol.



Immunohistochemistry analysis of TNFRSF11B in paraffin-embedded human kidney cancer using TNFRSF11B Rabbit polyclonal antibody (STJ29873) at dilution of 1:200 (40x lens). Perform microwave antigen retrieval with 10 mM PBS buffer pH 7.2 before commencing with immunohistochemistry staining protocol.



Immunohistochemistry analysis of TNFRSF11B in paraffin-embedded rat spleen using TNFRSF11B Rabbit polyclonal antibody (STJ29873) at dilution of 1:200 (40x lens). Perform microwave antigen retrieval with 10 mM PBS buffer pH 7.2 before commencing with immunohistochemistry staining protocol.



Western blot analysis of lysates from mouse liver, using TNFRSF11B Rabbit polyclonal antibody (STJ29873) at 1:1000 dilution. Secondary antibody: HRP Goat Anti-Rabbit IgG (H+L) (STJS000856) at 1:10000 dilution. Lysates/proteins: 25 μ g per lane. Blocking buffer: 3% nonfat dry milk in TBST. Detection: ECL Basic Kit. Exposure time: 90s.