

Anti-CAPN2 antibody (350-680) (STJ29868)

GENERAL INFORMATION

Product Type	Primary antibodies
Applications	WB/IHC-P/ELISA
Host / Source	Rabbit
Reactivity	Human/Mouse/Rat

PRODUCT PROPERTIES

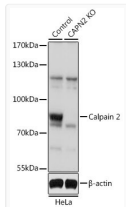
Clonality	Polyclonal
Concentration	Lot specific
Conjugation	Unconjugated
Purification	Affinity purification
Dilution Range	WB:1:500-1:2000 IHC-P:1:50-1:200 ELISA:Recommended starting concentration is 1 Mu g/mL. Please optimize the concentration based on your specific assay requirements.
Formulation	PBS with 0.02% Sodium Azide, 50% Glycerol, pH 7.3.
Isotype	IgG
Molecular Weight	Protein Mw: 80kDa Observed Mw: 80kDa
Storage Instruction	Store at -20°C for up to 1 year from the date of receipt, and avoid repeat freeze-thaw cycles.

TARGET INFORMATION

Gene ID	824
Gene Symbol	CAPN2
UniProt ID	CAN2_HUMAN
Immunogen Region	350-680
Immunogen Sequence	SDTYKWKWKLTKMDGNWRRGS TAGGCRNYPNTFWMNPQYLI KLEEEDEDEEDGESGCTFLV GLIQKHRRRQRKMGEDMHTI GFGIYEVPEELSGQTNIHLS KNFFLTNRARERSDTFINLR EVLNRRFKLPPGEYILVPSTF EPNKDGDFCIRVFSEKKADY QAVDDEIEANLEEFDISDD IDDGFRRLFAQLAGEDAEIS AFELQTLRRVLAKRQDIKS DGFSIETCKIMVDMMLDSDG
Specificity	Recombinant fusion protein containing a sequence corresponding to amino acids 350-680 of human Calpain 2 (NP_001739.2).

ADDITIONAL INFORMATION

Note **STRICTLY FOR FURTHER SCIENTIFIC RESEARCH USE ONLY (RUO). MUST NOT TO BE USED IN DIAGNOSTIC OR THERAPEUTIC APPLICATIONS.**



Western blot analysis of extracts from normal (control) and Calpain 2 knockout (KO) 293T cells, using Calpain 2 antibody (STJ29868) at 1:1000 dilution. Secondary antibody: HRP Goat Anti-Rabbit IgG (H+L) (STJS000856) at 1:10000 dilution. Lysates/proteins: 25 Mu g per lane. Blocking buffer: 3% nonfat dry milk in TBST. Detection: ECL Basic Kit. Exposure time: 1s.