

Anti-DPP4 antibody (29-766) (STJ29854)

GENERAL INFORMATION

Product Type	Primary antibodies
Applications	WB/IHC-P/ELISA
Host / Source	Rabbit
Reactivity	Human/Mouse/Rat

PRODUCT PROPERTIES

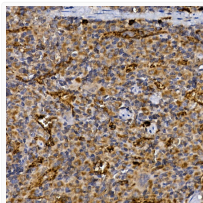
Clonality	Polyclonal
Concentration	Lot specific
Conjugation	Unconjugated
Purification	Affinity purification
Dilution Range	WB:1:500-1:1000 IHC-P:1:50-1:200 ELISA:Recommended starting concentration is 1 μ g/mL. Please optimize the concentration based on your specific assay requirements.
Formulation	PBS with 0.02% Sodium Azide, 50% Glycerol, pH 7.3.
Isotype	IgG
Molecular Weight	Protein Mw: 88kDa Observed Mw: 105kDa
Storage Instruction	Store at -20°C for up to 1 year from the date of receipt, and avoid repeat freeze-thaw cycles.

TARGET INFORMATION

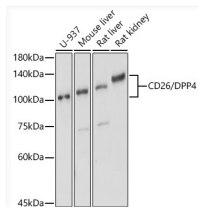
Gene ID	1803
Gene Symbol	DPP4
UniProt ID	DPP4_HUMAN
Immunogen Region	29-766
Immunogen Sequence	NKGTDDATADSRKTYTLTDY LKNTYRLKLYSLRWISDHEY LYKQENNILVFNAEYGNSSV FLENSTFDEFHGSINDYSIS PDGQFILLEYNVVKQWRHSY TASYDIYDLNKRQLTEERI PNNTQWVTWSPVGHKLAYVW NNDIYVKIEPNLPSYRITWT GKEDIYNGITDWWYEEVF SAYSALWWSPNGTFLAYAQF NDTEVPLIEYSFYSDLSLQY PKTVRVYPYPKAGAVNPVTK
Specificity	Recombinant fusion protein containing a sequence corresponding to amino acids 29-766 of human CD26/DPP4 (NP_001926.2).

ADDITIONAL INFORMATION

Note STRICTLY FOR FURTHER SCIENTIFIC RESEARCH USE ONLY (RUO). MUST NOT TO BE USED IN DIAGNOSTIC OR THERAPEUTIC APPLICATIONS.



Immunohistochemistry analysis of paraffin-embedded rat spleen using CD26/DPP4 Rabbit polyclonal antibody (STJ29854) at dilution of 1:20 (40x lens). Perform high pressure antigen retrieval with 10 mM citrate buffer pH 6.0 before commencing with immunohistochemistry staining protocol.



Western blot analysis of extracts of various cell lines, using CD26/DPP4 antibody (STJ29854) at 1:500 dilution. Secondary antibody: HRP Goat Anti-Rabbit IgG (H+L) (STJS000856) at 1:10000 dilution. Lysates/proteins: 25 μ g per lane. Blocking buffer: 3% nonfat dry milk in TBST. Detection: ECL Basic Kit. Exposure time: 1s.