

## Anti-YAP1 antibody (155-504) (STJ29831)

### GENERAL INFORMATION

Product Type	Primary antibodies
Applications	WB/IHC-P/IF/ICC/ELISA
Host / Source	Rabbit
Reactivity	Human/Mouse/Rat

### PRODUCT PROPERTIES

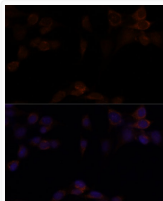
Clonality	Polyclonal
Concentration	Lot specific
Conjugation	Unconjugated
Purification	Affinity purification
Dilution Range	WB:1:500-1:1000 IHC-P:1:50-1:100 IF/CC:1:50-1:200 ELISA:Recommended starting concentration is 1 Mu g/mL. Please optimize the concentration based on your specific assay requirements.
Formulation	PBS with 0.02% Sodium Azide, 50% Glycerol, pH 7.3.
Isotype	IgG
Molecular Weight	Protein Mw: 54kDa Observed Mw: 72kDa
Storage Instruction	Store at -20°C for up to 1 year from the date of receipt, and avoid repeat freeze-thaw cycles.

### TARGET INFORMATION

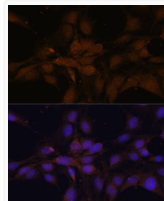
Gene ID	<a href="#">10413</a>
Gene Symbol	<a href="#">YAP1</a>
UniProt ID	<a href="#">YAP1_HUMAN</a>
Immunogen Region	155-504
Immunogen Sequence	PTAQLRLQSSFEIPDDVPLP AGWEMAKTSSGQRYFLNHID QTTWQDPRKAMLSQMNVTA PTSPVQQNMMSASGPLPD GWEQAMTQDGEIYYINHKNK TTSWLDPRLDPRFAMNQRI QSAPVKQPPPLAPQSPQGGV MGGNSNSNQQQMRLQQLQME KERLRKQQLLRQAMRNIN PSTANSPKQELALRSQLPT LEQDGGTQNPVSSPGMSQEL RTMTTNSSDPFLNSGTYHS
Specificity	Recombinant fusion protein containing a sequence corresponding to amino acids 155-504 of human YAP1 (NP_001123617.1).

### ADDITIONAL INFORMATION

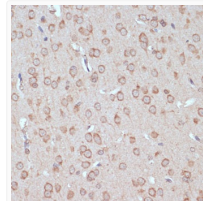
Note **STRICTLY FOR FURTHER SCIENTIFIC RESEARCH USE ONLY (RUO). MUST NOT TO BE USED IN DIAGNOSTIC OR THERAPEUTIC APPLICATIONS.**



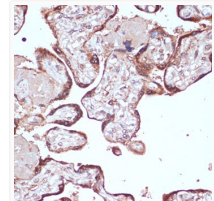
Immunofluorescence analysis of NIH/3T3 cells using YAP1 Rabbit polyclonal antibody (STJ29831) at dilution of 1:100. Secondary antibody: Cy3 Goat Anti-Rabbit IgG (H+L) at 1:500 dilution. Blue: DAPI for nuclear staining.



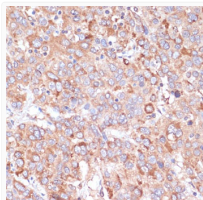
Immunofluorescence analysis of C6 cells using YAP1 Rabbit polyclonal antibody (STJ29831) at dilution of 1:100. Secondary antibody: Cy3 Goat Anti-Rabbit IgG (H+L) at 1:500 dilution. Blue: DAPI for nuclear staining.



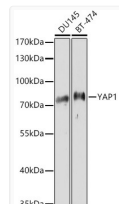
Immunohistochemistry analysis of YAP1 in paraffin-embedded rat brain using YAP1 Rabbit polyclonal antibody (STJ29831) at dilution of 1:100 (40x lens). Perform microwave antigen retrieval with 10 mM PBS buffer pH 7.2 before commencing with immunohistochemistry staining protocol.



Immunohistochemistry analysis of YAP1 in paraffin-embedded human placenta using YAP1 Rabbit polyclonal antibody (STJ29831) at dilution of 1:100 (40x lens). Perform microwave antigen retrieval with 10 mM PBS buffer pH 7.2 before commencing with immunohistochemistry staining protocol.



Immunohistochemistry analysis of YAP1 in paraffin-embedded human liver cancer using YAP1 Rabbit polyclonal antibody (STJ29831) at dilution of 1:100 (40x lens). Perform microwave antigen retrieval with 10 mM PBS buffer pH 7.2 before commencing with immunohistochemistry staining protocol.



Western blot analysis of various lysates using YAP1 Rabbit polyclonal antibody (STJ29831) at 1:1000 dilution. Secondary antibody: HRP Goat Anti-Rabbit IgG (H+L) (STJS000856) at 1:10000 dilution. Lysates/proteins: 25 Mu g per lane. Blocking buffer: 3% nonfat dry milk in TBST. Detection: ECL Basic Kit. Exposure time: 90s.