

## Anti-S100B antibody (1-92) (STJ29811)

### GENERAL INFORMATION

Product Type	Primary antibodies
Applications	WB/IHC-P/IF/ICC/IP/ELISA
Host / Source	Rabbit
Reactivity	Human/Mouse/Rat

### PRODUCT PROPERTIES

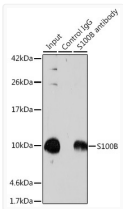
Clonality	Polyclonal
Concentration	Lot specific
Conjugation	Unconjugated
Purification	Affinity purification
Dilution Range	WB:1:500-1:1000 IHC-P:1:50-1:200 IF/CC:1:50-1:200 IP:0.5 Mu g-4 Mu g antibody for 400 Mu g-600 Mu g extracts of whole cells ELISA:Recommended starting concentration is 1 Mu g/mL. Please optimize the concentration based on your specif
Formulation	PBS with 0.09% Sodium Azide, 50% Glycerol, pH 7.3.
Isotype	IgG
Molecular Weight	Protein Mw: 11kDa Observed Mw: 11kDa
Storage Instruction	Store at -20°C for up to 1 year from the date of receipt, and avoid repeat freeze-thaw cycles.

### TARGET INFORMATION

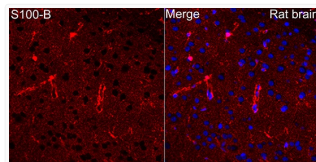
Gene ID	<a href="#">6285</a>
Gene Symbol	<a href="#">S100B</a>
UniProt ID	<a href="#">S100B_HUMAN</a>
Immunogen Region	1-92
Immunogen Sequence	MSELEKAMVALIDVFHQYSG REGDKHKLKSELKELINNE LSHFLEEIKEQEVVDKVMET LDNDGDGECDFQEFMAFVAM VTTACHEFFEHE
Specificity	Recombinant fusion protein containing a sequence corresponding to amino acids 1-92 of human S100B (NP_006263.1).

### ADDITIONAL INFORMATION

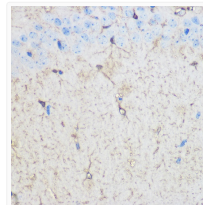
Note STRICTLY FOR FURTHER SCIENTIFIC RESEARCH USE ONLY (RUO). MUST NOT TO BE USED IN DIAGNOSTIC OR THERAPEUTIC APPLICATIONS.



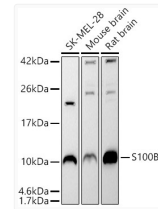
Immunoprecipitation analysis of 600 Mu g extracts of Mouse brain cells using 3 Mu g S100B antibody (STJ29811). Western blot was performed from the immunoprecipitate using S100B antibody (STJ29811) at a dilution of 1:500.



Immunofluorescence analysis of paraffin-embedded rat brain using S100B Rabbit polyclonal antibody (STJ29811) at dilution of 1:50 (40x lens). Secondary antibody: Cy3 Goat Anti-Rabbit IgG (H+L) at 1:500 dilution. Blue: DAPI for nuclear staining. Perform microwave antigen retrieval with 0.01M citrate buffer (pH 6.0) prior to IF staining.



Immunohistochemistry analysis of S100B in paraffin-embedded Mouse brain using S100B Rabbit polyclonal antibody (STJ29811) at dilution of 1:100 (40x lens). Perform microwave antigen retrieval with 10 mM PBS buffer pH 7.2 before commencing with immunohistochemistry staining protocol.



Western blot analysis of various lysates using S100B Rabbit polyclonal antibody (STJ29811) at 1:500 dilution. Secondary antibody:HRP Goat Anti-Rabbit IgG (H+L) (STJS000856) at 1:10000 dilution. Lysates/ proteins: 25 Mu g per lane. Blocking buffer: 3 % nonfat dry milk in TBST. Detection:ECL Basic Kit. Exposure:time: 90s.