

Anti-NOTCH2 antibody (2242-2471) (STJ29808)

GENERAL INFORMATION

Product Type	Primary antibodies
Applications	WB/IF/ICC/ELISA
Host / Source	Rabbit
Reactivity	Human/Mouse

PRODUCT PROPERTIES

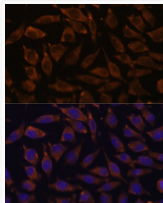
Clonality	Polyclonal
Concentration	Lot specific
Conjugation	Unconjugated
Purification	Affinity purification
Dilution Range	WB:1:500-1:2000 IF/ICC:1:50-1:200 ELISA:Recommended starting concentration is 1 Mu g/mL. Please optimize the concentration based on your specific assay requirements.
Formulation	PBS with 0.02% Sodium Azide, 50% Glycerol, pH 7.3.
Isotype	IgG
Molecular Weight	Protein Mw: 265kDa Observed Mw: 120kDa
Storage Instruction	Store at -20°C for up to 1 year from the date of receipt, and avoid repeat freeze-thaw cycles.

TARGET INFORMATION

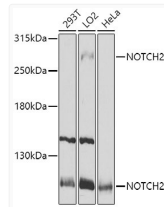
Gene ID	4853
Gene Symbol	NOTCH2
UniProt ID	NOTC2_HUMAN
Immunogen Region	2242-2471
Immunogen Sequence	SRLHPVVPADWMNRMEVNE TQYNEMFGMVLAPAEGTHPG IAPQSRPPEGKHITTPREPL PPIVTFQLIPKGSIAQPAGA PQQSTCPPAVAGPLPTMYQ IPEMARLPSVAFPTAMMPQQ DGQVAQTILPAYHPPASVG KYTPPSQHSYASSNAAERT PSHSGHLQGEHPYLTSPES PDQWSSSSPHSASDWSDVTT SPTPGGAGGGQRRGPGTHMSE PPHNNMQVYA
Specificity	Recombinant fusion protein containing a sequence corresponding to amino acids 2242-2471 of human NOTCH2 (NP_077719.2).

ADDITIONAL INFORMATION

Note STRICTLY FOR FURTHER SCIENTIFIC RESEARCH USE ONLY (RUO). MUST NOT TO BE USED IN DIAGNOSTIC OR THERAPEUTIC APPLICATIONS.



Immunofluorescence analysis of L929 cells using NOTCH2 antibody (STJ29808) at dilution of 1:100. Blue: DAPI for nuclear staining.



Western blot analysis of extracts of various cell lines, using NOTCH2 antibody (STJ29808) at 1:1000 dilution. Secondary antibody: HRP Goat Anti-Rabbit IgG (H+L) (STJS000856) at 1:10000 dilution. Lysates/proteins: 25 Mu g per lane. Blocking buffer: 3% nonfat dry milk in TBST. Detection: ECL Basic Kit. Exposure time: 5s.