

Anti-ApoE antibody (41-307) (STJ29789)

GENERAL INFORMATION

Product Type	Primary antibodies
Applications	WB/IHC-P/IF/ICC/ELISA
Host / Source	Rabbit
Reactivity	Human/Mouse/Rat

PRODUCT PROPERTIES

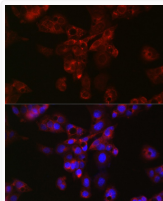
Clonality	Polyclonal
Concentration	Lot specific
Conjugation	Unconjugated
Purification	Affinity purification
Dilution Range	WB:1:500-1:1000 IHC-P:1:50-1:200 IF/ICC:1:50-1:200 ELISA:Recommended starting concentration is 1 Mu g/mL. Please optimize the concentration based on your specific assay requirements.
Formulation	PBS with 0.02% Sodium Azide, 50% Glycerol, pH 7.3.
Isotype	IgG
Molecular Weight	Protein Mw: 36kDa Observed Mw: 35kDa
Storage Instruction	Store at -20°C for up to 1 year from the date of receipt, and avoid repeat freeze-thaw cycles.

TARGET INFORMATION

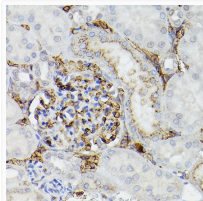
Gene ID	348
Gene Symbol	APOE
UniProt ID	APOE_HUMAN
Immunogen Region	41-307
Immunogen Sequence	GQRWELALGRFWDYLRWVQT LSEQVQEELSSQVTQELRA LMDETMKELKAYKSELEEQL TPVAEETRARLSKELQAAQA RLGADMEDVCGRLVQYRGEV QAMLGQSTEELRVRLASHLR KLRKRLLRDADDLQKRLAVY QAGAREGAERGLSAIRERLG PLVEQGRVRAATVGSLAGQP LQERAQAWGERLRARMEEMG SRTRDRLDEVKEQVAEVRRAK LEEQAQQIRLQAEAFQARL
Specificity	Recombinant fusion protein containing a sequence corresponding to amino acids 41-307 of human APOE (NP_000032.1).

ADDITIONAL INFORMATION

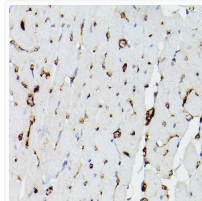
Note STRICTLY FOR FURTHER SCIENTIFIC RESEARCH USE ONLY (RUO). MUST NOT TO BE USED IN DIAGNOSTIC OR THERAPEUTIC APPLICATIONS.



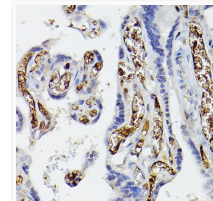
Immunofluorescence analysis of HepG2 cells using APOE Rabbit polyclonal antibody (STJ29789) at dilution of 1:50 (40x lens). Secondary antibody: Cy3 Goat Anti-Rabbit IgG (H+L) at 1:500 dilution. Blue: DAPI for nuclear staining.



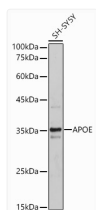
Immunohistochemistry analysis of APOE in paraffin-embedded rat kidney using APOE Rabbit polyclonal antibody (STJ29789) at dilution of 1:50 (40x lens). Perform high pressure antigen retrieval with 10 mM citrate buffer pH 6.0 before commencing with immunohistochemistry staining protocol.



Immunohistochemistry analysis of APOE in paraffin-embedded rat heart using APOE Rabbit polyclonal antibody (STJ29789) at dilution of 1:50 (40x lens). Perform high pressure antigen retrieval with 10 mM citrate buffer pH 6.0 before commencing with immunohistochemistry staining protocol.



Immunohistochemistry analysis of APOE in paraffin-embedded human placenta using APOE Rabbit polyclonal antibody (STJ29789) at dilution of 1:50 (40x lens). Perform high pressure antigen retrieval with 10 mM citrate buffer pH 6.0 before commencing with immunohistochemistry staining protocol.



Western blot analysis of lysates from SH-SY5Y cells, using APOE Rabbit polyclonal antibody (STJ29789) at 1:500 dilution. Secondary antibody: HRP Goat Anti-Rabbit IgG (H+L) (STJS000856) at 1:10000 dilution. Lysates/proteins: 25 Mu g per lane. Blocking buffer: 3% nonfat dry milk in TBST. Detection: ECL Basic Kit. Exposure time: 1s.