

Anti-LRP5 antibody (1415-1435) (STJ29785)

GENERAL INFORMATION

Product Type	Primary antibodies
Applications	WB/IF/ICC/ELISA
Host / Source	Rabbit
Reactivity	Mouse/Rat

PRODUCT PROPERTIES

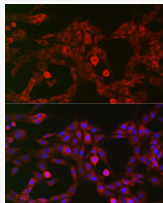
Clonality	Polyclonal
Concentration	Lot specific
Conjugation	Unconjugated
Purification	Affinity purification
Dilution Range	WB:1:100-1:500 IF/CC:1:50-1:200 ELISA:Recommended starting concentration is 1 Mu g/mL. Please optimize the concentration based on your specific assay requirements.
Formulation	PBS with 0.05% Proclin300, 50% Glycerol, pH7.3.
Isotype	IgG
Molecular Weight	Protein Mw: 179kDa Observed Mw: 180-200kDa
Storage Instruction	Store at -20°C for up to 1 year from the date of receipt, and avoid repeat freeze-thaw cycles.

TARGET INFORMATION

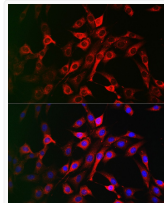
Gene ID	4041
Gene Symbol	LRP5
UniProt ID	LRP5_HUMAN
Immunogen Region	1415-1435
Immunogen Sequence	MGGVYFVCQRVVCQRYAGAN GPFPHYVSGTPHVPLNFIA PGGSQHGPFPTGIACGKSMMS SVSLMGGRRGGVPLYDRNHVT GASSSSSSSTKATLYPPILN PPPSPATDPSLYNMDMFYSS NIPATARPYRPIIRGMAPP TTPCSTDVCDSDYSASRWKA SKYYLDLNSDSDPYPPPTTP HSQYLSAEDSCPPSPATERS YFHLFPPPSPCTDSS
Specificity	A synthetic peptide corresponding to a sequence within amino acids 1400-1500 of human LRP5 (NP_002326.2).

ADDITIONAL INFORMATION

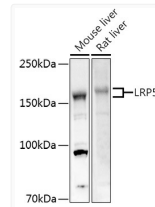
Note **STRICTLY FOR FURTHER SCIENTIFIC RESEARCH USE ONLY (RUO). MUST NOT TO BE USED IN DIAGNOSTIC OR THERAPEUTIC APPLICATIONS.**



Immunofluorescence analysis of PC-12 cells using LRP5 Rabbit polyclonal antibody (STJ29785) at dilution of 1:200 (40x lens). Blue: DAPI for nuclear staining.



Immunofluorescence analysis of NIH/3T3 cells using LRP5 Rabbit polyclonal antibody (STJ29785) at dilution of 1:200 (40x lens). Blue: DAPI for nuclear staining.



Western blot analysis of extracts of various cell lines, using LRP5 antibody (STJ29785) at 1:500 dilution. Secondary antibody: HRP Goat Anti-Rabbit IgG (H+L) (STJS000856) at 1:10000 dilution. Lysates/proteins: 25 Mu g per lane. Blocking buffer: 3% nonfat dry milk in TBST. Detection: ECL Enhanced Kit. Exposure time: 180s.