

## Anti-ITGA2 antibody (30-162) (STJ29766)

### GENERAL INFORMATION

Product Type	Primary antibodies
Applications	WB/IHC-P/IF/ICC/ELISA
Host / Source	Rabbit
Reactivity	Human/Mouse/Rat

### PRODUCT PROPERTIES

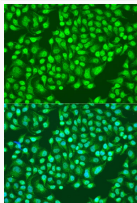
Clonality	Polyclonal
Concentration	Lot specific
Conjugation	Unconjugated
Purification	Affinity purification
Dilution Range	WB:1:500-1:1000 IHC-P:1:50-1:200 IF/ICC:1:50-1:200 ELISA:Recommended starting concentration is 1 Mu g/mL. Please optimize the concentration based on your specific assay requirements.
Formulation	PBS with 0.02% Sodium Azide, 50% Glycerol, pH 7.3.
Isotype	IgG
Molecular Weight	Protein Mw: 129kDa Observed Mw: 150kDa
Storage Instruction	Store at -20°C for up to 1 year from the date of receipt, and avoid repeat freeze-thaw cycles.

### TARGET INFORMATION

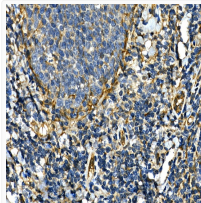
Gene ID	<a href="#">3673</a>
Gene Symbol	<a href="#">ITGA2</a>
UniProt ID	<a href="#">ITA2_HUMAN</a>
Immunogen Region	30-162
Immunogen Sequence	YNVGLPEAKIFSGPSSSEQFG YAVQQFINPKGNWLLVGVSPW SGFPENRMGDVYKCPVDLST ATCEKLNLTQSTSIPIVNTKM KTNMSLGLILTRNMGTTGGFL TCGPLWAQQCGNQYTTGVC SDISPDFQLSASF
Specificity	A synthetic peptide corresponding to a sequence within amino acids 30-162 of human Integrin alpha 2 (ITGA2/CD49b) (NP_002194.2).

### ADDITIONAL INFORMATION

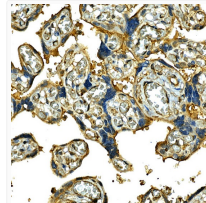
Note **STRICTLY FOR FURTHER SCIENTIFIC RESEARCH USE ONLY (RUO). MUST NOT TO BE USED IN DIAGNOSTIC OR THERAPEUTIC APPLICATIONS.**



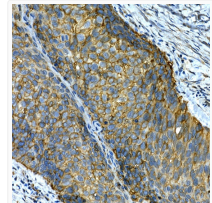
Immunofluorescence analysis of U2OS cells using [KO Validated] Integrin alpha 2 (ITGA2/CD49b) Rabbit polyclonal antibody (STJ29766) at dilution of 1:100. Secondary antibody: Cy3 Goat Anti-Rabbit IgG (H+L) at 1:500 dilution. Blue: DAPI for nuclear staining.



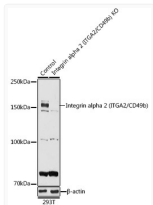
Immunohistochemistry analysis of Integrin alpha 2 (ITGA2/CD49b) in paraffin-embedded human tonsil using [KO Validated] Integrin alpha 2 (ITGA2/CD49b) Rabbit polyclonal antibody (STJ29766) at dilution of 1:50 (40x lens). Perform high pressure antigen retrieval with 10 mM citrate buffer pH 6.0 before commencing with immunohistochemistry staining protocol.



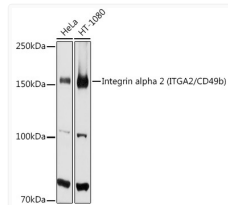
Immunohistochemistry analysis of Integrin alpha 2 (ITGA2/CD49b) in paraffin-embedded human placenta using [KO Validated] Integrin alpha 2 (ITGA2/CD49b) Rabbit polyclonal antibody (STJ29766) at dilution of 1:50 (40x lens). Perform high pressure antigen retrieval with 10 mM citrate buffer pH 6.0 before commencing with immunohistochemistry staining protocol.



Immunohistochemistry analysis of Integrin alpha 2 (ITGA2/CD49b) in paraffin-embedded human lung cancer using [KO Validated] Integrin alpha 2 (ITGA2/CD49b) Rabbit polyclonal antibody (STJ29766) at dilution of 1:50 (40x lens). Perform high pressure antigen retrieval with 10 mM citrate buffer pH 6.0 before commencing with immunohistochemistry staining protocol.



Western blot analysis of lysates from wild type (WT) and Integrin alpha 2 (ITGA2/CD49b) knockout (KO) 293T cells, using [KO Validated] Integrin alpha 2 (ITGA2/CD49b) Rabbit polyclonal antibody (STJ29766) at 1:1000 dilution. Secondary antibody: HRP Goat Anti-Rabbit IgG (H+L) (STJS000856) at 1:10000 dilution. Lysates/proteins: 25 Mu g per lane. Blocking buffer: 3% nonfat dry milk in TBST. Detection: ECL Basic Kit. Exposure time: 90s.



Western blot analysis of various lysates using [KO Validated] Integrin alpha 2 (ITGA2/CD49b) Rabbit polyclonal antibody (STJ29766) at 1:1000 dilution. Secondary antibody: HRP Goat Anti-Rabbit IgG (H+L) (STJS000856) at 1:10000 dilution. Lysates/proteins: 25 Mu g per lane. Blocking buffer: 3% nonfat dry milk in TBST. Detection: ECL Basic Kit. Exposure time: 90s.