

Anti-FANCM antibody (390-660) (STJ29739)

GENERAL INFORMATION

Product Type	Primary antibodies
Applications	WB/IF/ICC/ELISA
Host / Source	Rabbit
Reactivity	Human

PRODUCT PROPERTIES

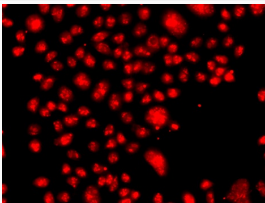
Clonality	Polyclonal
Concentration	Lot specific
Conjugation	Unconjugated
Purification	Affinity purification
Dilution Range	WB:1:500-1:2000 IF/CC:1:50-1:100 ELISA:Recommended starting concentration is 1 Mu g/mL. Please optimize the concentration based on your specific assay requirements.
Formulation	PBS with 0.02% Sodium Azide, 50% Glycerol, pH 7.3.
Isotype	IgG
Molecular Weight	Protein Mw: 232kDa Observed Mw: Refer to figures
Storage Instruction	Store at -20°C for up to 1 year from the date of receipt, and avoid repeat freeze-thaw cycles.

TARGET INFORMATION

Gene ID	57697
Gene Symbol	FANCM
UniProt ID	FANCM_HUMAN
Immunogen Region	390-660
Immunogen Sequence	MDGTKGMTRSKNELGRNEDF MKLYNHLECMFARTRSTSAN GISAIQQGDKNKKFYVSHPK LKKLEEVVIEHFKSWNAENT TEKKRDETRVMIFSSFRDSV QEIAEMLSQHQPIIRVMTFV GHASGKSTKGFTQKEQLEVV KQFRDGGYNTLVSTCVGEEG LDIGEVDLIICFDSQKSPIR LVQRMGRTGRKRQGRIVIL SEGREERIYNQSQSNKRSIY KAISSNRQVLHFYQRSPRM
Specificity	Recombinant fusion protein containing a sequence corresponding to amino acids 390-660 of human FANCM (NP_065988.1).

ADDITIONAL INFORMATION

Note	STRICTLY FOR FURTHER SCIENTIFIC RESEARCH USE ONLY (RUO). MUST NOT TO BE USED IN DIAGNOSTIC OR THERAPEUTIC APPLICATIONS.
------	---



Immunofluorescence analysis of A549 cells using FANCM antibody (STJ29739).