

## Anti-SIRT4 antibody (29-314) (STJ29722)

### GENERAL INFORMATION

Product Type	Primary antibodies
Applications	WB/IHC-P/ELISA
Host / Source	Rabbit
Reactivity	Human/Mouse/Rat

### PRODUCT PROPERTIES

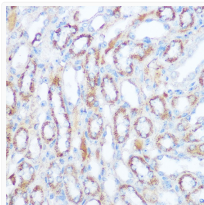
Clonality	Polyclonal
Concentration	Lot specific
Conjugation	Unconjugated
Purification	Affinity purification
Dilution Range	WB:1:500-1:2000 IHC-P:1:50-1:200 ELISA:Recommended starting concentration is 1 µg/mL. Please optimize the concentration based on your specific assay requirements.
Formulation	PBS with 0.05% Proclin300, 50% Glycerol, pH 7.3.
Isotype	IgG
Molecular Weight	Protein Mw: 35kDa Observed Mw: 32kDa
Storage Instruction	Store at -20°C for up to 1 year from the date of receipt, and avoid repeat freeze-thaw cycles.

### TARGET INFORMATION

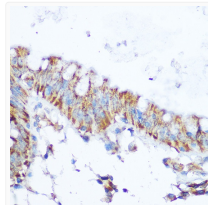
Gene ID	<a href="#">23409</a>
Gene Symbol	<a href="#">SIRT4</a>
UniProt ID	<a href="#">SIR4_HUMAN</a>
Immunogen Region	29-314
Immunogen Sequence	IQLFVPASPLDPEKVKELQ RFITLSKRLVMTGAGISTE SGIPDYRSEKVGLYARTDRR PIQHGFVRSAPIRQRYWAR NFGWVQFSSHQPNPAHWAL STWEKLGKLYWLVTONVDAL HTKAGSRRLTELHGCMDRV L CLDCGEQTPRGVLQERFQVL NPTWSAEAHGLAPDGDVFLS EEQVRSFQVPTCVQCGGHLK PDVVFVFGDTVNPDKVDFVHK RVKEADSLLVGSSLQVYS
Specificity	Recombinant fusion protein containing a sequence corresponding to amino acids 29-313 of human SIRT4 (NP_036372.1).

### ADDITIONAL INFORMATION

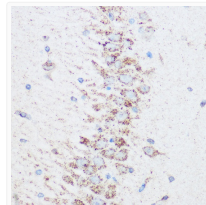
Note **STRICTLY FOR FURTHER SCIENTIFIC RESEARCH USE ONLY (RUO). MUST NOT TO BE USED IN DIAGNOSTIC OR THERAPEUTIC APPLICATIONS.**



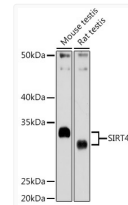
Immunohistochemistry analysis of paraffin-embedded mouse kidney using SIRT4 Rabbit polyclonal antibody (STJ29722) at dilution of 1:100 (40x lens). Perform microwave antigen retrieval with 10 mM Tris/EDTA buffer pH 9.0 before commencing with immunohistochemistry staining protocol.



Immunohistochemistry analysis of paraffin-embedded human colon using SIRT4 Rabbit polyclonal antibody (STJ29722) at dilution of 1:100 (40x lens). Perform microwave antigen retrieval with 10 mM Tris/EDTA buffer pH 9.0 before commencing with immunohistochemistry staining protocol.



Immunohistochemistry analysis of paraffin-embedded rat brain using SIRT4 Rabbit polyclonal antibody (STJ29722) at dilution of 1:100 (40x lens). Perform microwave antigen retrieval with 10 mM Tris/EDTA buffer pH 9.0 before commencing with immunohistochemistry staining protocol.



Western blot analysis of extracts of various cell lines, using SIRT4 Rabbit polyclonal antibody (STJ29722) at 1:1000 dilution. Secondary antibody: HRP Goat Anti-Rabbit IgG (H+L) (STJS000856) at 1:10000 dilution. Lysates/proteins: 25 µg per lane. Blocking buffer: 3% nonfat dry milk in TBST. Detection: ECL Basic Kit. Exposure time: 180s.