

Anti-CCL11 antibody (1-97) (STJ29706)

GENERAL INFORMATION

| | |
|---------------|--------------------|
| Product Type | Primary antibodies |
| Applications | WB/IF/ICC/ELISA |
| Host / Source | Rabbit |
| Reactivity | Human/Mouse/Rat |

PRODUCT PROPERTIES

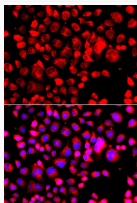
| | |
|---------------------|---|
| Clonality | Polyclonal |
| Concentration | Lot specific |
| Conjugation | Unconjugated |
| Purification | Affinity purification |
| Dilution Range | WB:1:100-1:500 IF/CC:1:50-1:100 ELISA:Recommended starting concentration is 1 Mu g/mL. Please optimize the concentration based on your specific assay requirements. |
| Formulation | PBS with 0.05% Proclin300, 50% Glycerol, pH 7.3. |
| Isotype | IgG |
| Molecular Weight | Protein Mw: 11kDa Observed Mw: 11kDa |
| Storage Instruction | Store at -20°C for up to 1 year from the date of receipt, and avoid repeat freeze-thaw cycles. |

TARGET INFORMATION

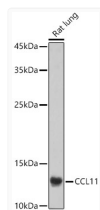
| | |
|--------------------|--|
| Gene ID | 6356 |
| Gene Symbol | CCL11 |
| UniProt ID | CCL11_HUMAN |
| Immunogen Region | 1-97 |
| Immunogen Sequence | MKVSAALLWLLIIAAAFSPQ GLAGPASVPTTCCFNLANRK IPLQRLESYRRITSGKCPQK AVIFKTKLAKDICADPKKKW VQDSMKYLDQKSPTPKP |
| Specificity | Recombinant fusion protein containing a sequence corresponding to amino acids 1-97 of human CCL11 (NP_002977.1). |

ADDITIONAL INFORMATION

Note STRICTLY FOR FURTHER SCIENTIFIC RESEARCH USE ONLY (RUO). MUST NOT TO BE USED IN DIAGNOSTIC OR THERAPEUTIC APPLICATIONS.



Immunofluorescence analysis of A549 cells using CCL11 antibody (STJ29706). Blue: DAPI for nuclear staining.



Western blot analysis of extracts of Rat lung, using CCL11 antibody (STJ29706) at 1:500 dilution. Secondary antibody: HRP Goat Anti-Rabbit IgG (H+L) (STJS000856) at 1:10000 dilution. Lysates/proteins: 25 Mu g per lane. Blocking buffer: 3% nonfat dry milk in TBST. Detection: ECL Enhanced Kit. Exposure time: 180s.