

Anti-LMO1 antibody (1-156) (STJ29699)

GENERAL INFORMATION

Product Type	Primary antibodies
Applications	WB/ELISA
Host / Source	Rabbit
Reactivity	Human

PRODUCT PROPERTIES

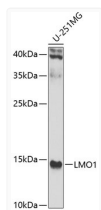
Clonality	Polyclonal
Concentration	Lot specific
Conjugation	Unconjugated
Purification	Affinity purification
Dilution Range	WB:1:500-1:2000 ELISA:Recommended starting concentration is 1 Mu g/mL. Please optimize the concentration based on your specific assay requirements.
Formulation	PBS with 0.02% Sodium Azide, 50% Glycerol, pH 7.3.
Isotype	IgG
Molecular Weight	Protein Mw: 18kDa Observed Mw: 14kDa
Storage Instruction	Store at-20°C for up to 1 year from the date of receipt, and avoid repeat freeze-thaw cycles.

TARGET INFORMATION

Gene ID	4004
Gene Symbol	LMO1
UniProt ID	RBTN1_HUMAN
Immunogen Region	1-156
Immunogen Sequence	MMVLDKEDGVPMLSVQPKGK QKGCAGCNRKIKDRYLLKAL DKYWHEDECLKACCCDCRLGE VGSTLYTKANLILCRRDYLR LFGTTGNCAACSKLIPAFEM VMRRARDNVYHLDFACQLCN QRFCVGDKFFLKNMILCQM DYEEGQLNGTFESQVQ
Specificity	Recombinant fusion protein containing a sequence corresponding to amino acids 1-156 of human LMO1 (NP_002306.1).

ADDITIONAL INFORMATION

Note STRICTLY FOR FURTHER SCIENTIFIC RESEARCH USE ONLY (RUO). MUST NOT TO BE USED IN DIAGNOSTIC OR THERAPEUTIC APPLICATIONS.



Western blot analysis of extracts of U-251MG cells, using LMO1 antibody (STJ29699) at 1:1000 dilution. Secondary antibody: HRP Goat Anti-Rabbit IgG (H+L) (STJS000856) at 1:10000 dilution. Lysates/proteins: 25 Mu g per lane. Blocking buffer: 3% nonfat dry milk in TBST. Detection: ECL Enhanced Kit. Exposure time: 90s.