

Anti-EPAS1 antibody (678-745) (STJ29691)

GENERAL INFORMATION

Product Type	Primary antibodies
Applications	WB/IHC-P/IF/ICC/ELISA
Host / Source	Rabbit
Reactivity	Human/Mouse/Rat

PRODUCT PROPERTIES

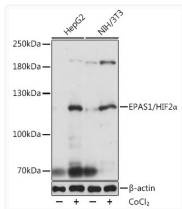
Clonality	Polyclonal
Concentration	Lot specific
Conjugation	Unconjugated
Purification	Affinity purification
Dilution Range	WB:1:500-1:2000 IHC-P:1:50-1:200 IF/CC:1:50-1:200 ELISA:Recommended starting concentration is 1 µg/mL. Please optimize the concentration based on your specific assay requirements.
Formulation	PBS with 0.09% Sodium Azide, 50% Glycerol, pH7.3.
Isotype	IgG
Molecular Weight	Protein Mw: 96kDa Observed Mw: 120kDa
Storage Instruction	Store at -20°C for up to 1 year from the date of receipt, and avoid repeat freeze-thaw cycles.

TARGET INFORMATION

Gene ID	2034
Gene Symbol	EPAS1
UniProt ID	EPAS1_HUMAN
Immunogen Region	678-745
Immunogen Sequence	TFKTRSAKGFARGPDVLSF AMVALSNKLLKLRQLEYEEQ AFQDLSGGDPPGGSTSHLMW KRMKNLRG
Specificity	Recombinant fusion protein containing a sequence corresponding to amino acids 678-745 of human EPAS1/HIF2 Alpha (NP_001421.2).

ADDITIONAL INFORMATION

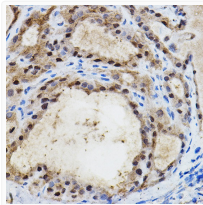
Note **STRICTLY FOR FURTHER SCIENTIFIC RESEARCH USE ONLY (RUO). MUST NOT TO BE USED IN DIAGNOSTIC OR THERAPEUTIC APPLICATIONS.**



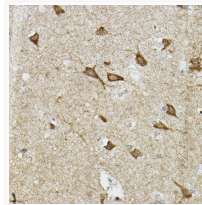
Western blot analysis of various lysates using EPAS1/HIF2 Alpha Rabbit pAb (STJ29691) at 1:1000 dilution.

Secondary antibody: HRP-conjugated Goat anti-Rabbit IgG (H+L) (STJS000856) at 1:10000 dilution.

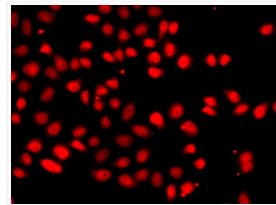
Lysates/proteins: 25 µg per lane.
Blocking buffer: 3% nonfat dry milk in TBST.
Detection: ECL Basic Kit
Exposure time: 1s.



Immunohistochemistry analysis of paraffin-embedded Human thyroid cancer using EPAS1/HIF2 Alpha Rabbit pAb (STJ29691) at dilution of 1:100 (40x lens). High pressure antigen retrieval performed with 0.01M Citrate Bufferr (pH 6.0) prior to immunohistochemistry staining.



Immunohistochemistry analysis of paraffin-embedded Human brain using EPAS1/HIF2 Alpha Rabbit pAb (STJ29691) at dilution of 1:100 (40x lens). High pressure antigen retrieval performed with 0.01M Citrate Bufferr (pH 6.0) prior to immunohistochemistry staining.



Immunofluorescence analysis of A549 cells using EPAS1/HIF2 Alpha Rabbit pAb (STJ29691). Secondary antibody: Cy3-conjugated Goat anti-Rabbit IgG (H+L) (STJS001166) at 1:500 dilution.