

Anti-MT-CO1 antibody (415-514) (STJ29669)

GENERAL INFORMATION

Product Type	Primary antibodies
Applications	WB/IHC-P/IF/ELISA
Host / Source	Rabbit
Reactivity	Human/Mouse/Rat

PRODUCT PROPERTIES

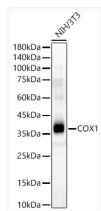
Clonality	Polyclonal
Concentration	Lot specific
Conjugation	Unconjugated
Purification	Affinity purification
Dilution Range	WB:1:500-1:1000 IHC-P:1:50-1:200 ELISA:Recommended starting concentration is 1 μ g/mL. Please optimize the concentration based on your specific assay requirements.
Formulation	PBS with 0.05% Proclin300, 50% Glycerol, pH 7.3.
Isotype	IgG
Molecular Weight	Protein Mw: 56kDa Observed Mw: 37kDa/34kDa
Storage Instruction	Store at -20°C for up to 1 year from the date of receipt, and avoid repeat freeze-thaw cycles.

TARGET INFORMATION

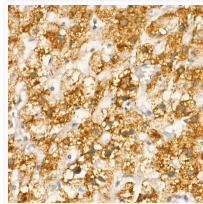
Immunogen Region	415-514
Immunogen Sequence	AIMFVGVNMTFFPQHFLGLS GMPRRYSYDPDAYTTWNTVS SMGSFISLTAVLIMIFMIWE AFASKREVMSVSYASTNLEW LHGCPPPYHTFEEPTYVKVK
Specificity	A synthetic peptide corresponding to a sequence within amino acids 415-514 of mouse COX1 (NP_904330.1).

ADDITIONAL INFORMATION

Note **STRICTLY FOR FURTHER SCIENTIFIC RESEARCH USE ONLY (RUO). MUST NOT TO BE USED IN DIAGNOSTIC OR THERAPEUTIC APPLICATIONS.**



Western blot analysis of NIH/3T3, using COX1 antibody (STJ29669) at 1:400 dilution. Secondary antibody: HRP Goat Anti-rabbit IgG (H+L) (STJS000856) at 1:10000 dilution. Lysates/proteins: 25 μ g per lane. Blocking buffer: 3% non-fat dry milk in TBST. Detection: ECL Basic Kit. Exposure time: 30s.



Immunohistochemistry analysis of paraffin-embedded human liver using COX1 rabbit polyclonal antibody (STJ29669) at dilution of 1:20 (40x lens). Perform high pressure antigen retrieval with 10 mM citrate buffer pH 6.0 before commencing with immunohistochemistry staining protocol.