

Anti-ZNF24 antibody (169-368) (STJ29636)

GENERAL INFORMATION

Product Type	Primary antibodies
Applications	WB/ELISA
Host / Source	Rabbit
Reactivity	Mouse/Rat

PRODUCT PROPERTIES

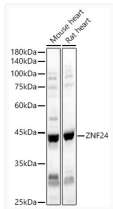
Clonality	Polyclonal
Concentration	Lot specific
Conjugation	Unconjugated
Purification	Affinity purification
Dilution Range	WB:1:500-1:1000 ELISA:Recommended starting concentration is 1 µg/mL. Please optimize the concentration based on your specific assay requirements.
Formulation	PBS with 0.02% Sodium Azide, 50% Glycerol, pH 7.3.
Isotype	IgG
Molecular Weight	Protein Mw: 42kDa Observed Mw: 42kDa
Storage Instruction	Store at -20°C for up to 1 year from the date of receipt, and avoid repeat freeze-thaw cycles.

TARGET INFORMATION

Gene ID	7572
Gene Symbol	ZNF24
UniProt ID	ZNF24_HUMAN
Immunogen Region	169-368
Immunogen Sequence	LDAVENQLKVASWELHSLRH CDDDGRTEGALAPKQELPS ALESHEVPGTLNMGVPOIFK YGETCFPKGRFERKRNPSRK KQHICDECCKHFSQGSALIL HQRHSGEKPYGCECGKAF SRSSILVQHQRVHTGEKPYK CLECGKAFSQNSGLNHQRI HTGEKPYECVQCGKSYSQSS NLFRHQRRHNAEKLLNVVKV
Specificity	Recombinant fusion protein containing a sequence corresponding to amino acids 169-368 of human ZNF24 (NP_008896.2).

ADDITIONAL INFORMATION

Note **STRICTLY FOR FURTHER SCIENTIFIC RESEARCH USE ONLY (RUO). MUST NOT TO BE USED IN DIAGNOSTIC OR THERAPEUTIC APPLICATIONS.**



Western blot analysis of various lysates, using ZNF24 antibody (STJ29636) at 1:900 dilution. Secondary antibody: HRP Goat Anti-Rabbit IgG (H+L) (STJS000856) at 1:10000 dilution. Lysates/proteins: 25 µg per lane. Blocking buffer: 3% nonfat dry milk in TBST. Detection: ECL Basic Kit. Exposure time: 30s.