

Anti-LDB3 antibody (1-283) (STJ29598)

GENERAL INFORMATION

Product Type	Primary antibodies
Applications	WB/IHC-P/IF/ICC/ELISA
Host / Source	Rabbit
Reactivity	Human/Mouse/Rat

PRODUCT PROPERTIES

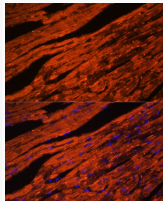
Clonality	Polyclonal
Concentration	Lot specific
Conjugation	Unconjugated
Purification	Affinity purification
Dilution Range	WB:1:500-1:2000 IHC-P:1:50-1:200 IF/CC:1:50-1:200 ELISA:Recommended starting concentration is 1 Mu g/mL. Please optimize the concentration based on your specific assay requirements.
Formulation	PBS with 0.02% Sodium Azide, 50% Glycerol, pH 7.3.
Isotype	IgG
Molecular Weight	Protein Mw: 77kDa Observed Mw: 50kDa/90kDa
Storage Instruction	Store at -20°C for up to 1 year from the date of receipt, and avoid repeat freeze-thaw cycles.

TARGET INFORMATION

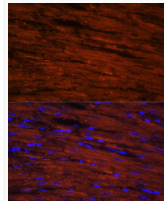
Gene ID	11155
Gene Symbol	LDB3
UniProt ID	LDB3_HUMAN
Immunogen Region	1-283
Immunogen Sequence	MSYSVTLTGPWPWFRLQGG KDFNMPLTISRITPGSKAAQ SLSQGDLVVAIDGVNTDTM THLEAQNKIKSASYNLSLTL QKSKRPIPISTTAPPVQTPL PVIHQKVVVNSPANADYQE RFNPSALKDSALSTHKPIEV KGLGGKATIIHAQYNTPIISM YSQDAIMDAIAGQAQAGSD FSGSLPIKDLAVDSASPVYQ AVIKSQNKPEDEADEWARRS SNLQSRFRILAQMTGTEF
Specificity	Recombinant fusion protein containing a sequence corresponding to amino acids 1-283 of human LDB3 (NP_001073585.1).

ADDITIONAL INFORMATION

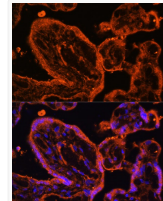
Note STRICTLY FOR FURTHER SCIENTIFIC RESEARCH USE ONLY (RUO). MUST NOT TO BE USED IN DIAGNOSTIC OR THERAPEUTIC APPLICATIONS.



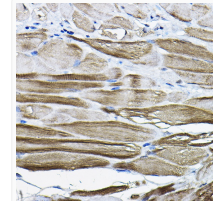
Immunofluorescence analysis of mouse heart cells using LDB3 antibody (STJ29598) at dilution of 1:100. Blue: DAPI for nuclear staining.



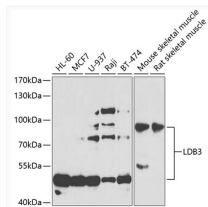
Immunofluorescence analysis of rat heart cells using LDB3 antibody (STJ29598) at dilution of 1:100. Blue: DAPI for nuclear staining.



Immunofluorescence analysis of human placenta cells using LDB3 antibody (STJ29598) at dilution of 1:100. Blue: DAPI for nuclear staining.



Immunohistochemistry analysis of paraffin-embedded mouse stomach using LDB3 Rabbit polyclonal antibody (STJ29598) at dilution of 1:200 (40x lens). Perform high pressure antigen retrieval with 10 mM citrate buffer pH 6.0 before commencing with immunohistochemistry staining protocol.



Western blot analysis of extracts of various cell lines, using LDB3 antibody (STJ29598) at 1:1000 dilution. Secondary antibody: HRP Goat Anti-Rabbit IgG (H+L) (STJS000856) at 1:10000 dilution. Lysates/proteins: 25 Mu g per lane. Blocking buffer: 3% nonfat dry milk in TBST. Detection: ECL Basic Kit. Exposure time: 90s.