

## Anti-NR2E1 antibody (106-385) (STJ29591)

### GENERAL INFORMATION

Product Type	Primary antibodies
Applications	WB/ELISA
Host / Source	Rabbit
Reactivity	Human/Mouse

### PRODUCT PROPERTIES

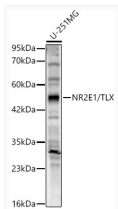
Clonality	Polyclonal
Concentration	Lot specific
Conjugation	Unconjugated
Purification	Affinity purification
Dilution Range	WB:1:500-1:2000 ELISA:Recommended starting concentration is 1 µg/mL. Please optimize the concentration based on your specific assay requirements.
Formulation	PBS with 0.02% Sodium Azide, 50% Glycerol, pH 7.3.
Isotype	IgG
Molecular Weight	Protein Mw: 43kDa Observed Mw: 48kDa
Storage Instruction	Store at -20°C for up to 1 year from the date of receipt, and avoid repeat freeze-thaw cycles.

### TARGET INFORMATION

Gene ID	<a href="#">7101</a>
Gene Symbol	<a href="#">NR2E1</a>
UniProt ID	<a href="#">NR2E1_HUMAN</a>
Immunogen Region	106-385
Immunogen Sequence	YFRGHKEENGAAAHFPSAAL PAPAFFTAVTQLPHEGLELA AVSTTPERQTLVLSLAQTPPK YPHEVNGTPMYLYEVATESV CESAARLLFMSIKWAKSVPA FSTLSLQDQLMLEDAREL FVLGIAQWAIIPVDANTLLAV SGMNGDNTDSQKLNKIISEI QALQEVVARFRQLRLDATEF ACLKCIIVTFKAVPTHSGSEL RSEFRNAAAIAALQDEAQLTL NSYIHTRYPTQPCRFGKLL
Specificity	Recombinant fusion protein containing a sequence corresponding to amino acids 106-385 of human NR2E1/TLX (NP_003260.1).

### ADDITIONAL INFORMATION

Note STRICTLY FOR FURTHER SCIENTIFIC RESEARCH USE ONLY (RUO). MUST NOT TO BE USED IN DIAGNOSTIC OR THERAPEUTIC APPLICATIONS.



Western blot analysis of lysates from U-251MG cells, using NR2E1/TLX Rabbit polyclonal antibody (STJ29591) at 1:500 dilution. Secondary antibody: HRP Goat Anti-Rabbit IgG (H+L) (STJS000856) at 1:10000 dilution. Lysates/proteins: 25µg per lane. Blocking buffer: 3% nonfat dry milk in TBST. Detection: ECL Basic Kit. Exposure time: 30s.