

Anti-TEAD3 antibody (130-330) (STJ29590)

GENERAL INFORMATION

Product Type	Primary antibodies
Applications	WB/IHC-P/IF/ICC/ELISA
Host / Source	Rabbit
Reactivity	Human/Mouse/Rat

PRODUCT PROPERTIES

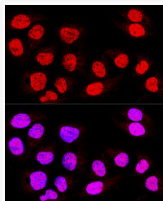
Clonality	Polyclonal
Concentration	Lot specific
Conjugation	Unconjugated
Purification	Affinity purification
Dilution Range	WB:1:500-1:1000 IHC-P:1:50-1:200 IF/ICC:1:50-1:200 ELISA:Recommended starting concentration is 1 µg/mL. Please optimize the concentration based on your specific assay requirements.
Formulation	PBS with 0.02% Sodium Azide, 50% Glycerol, pH 7.3.
Isotype	IgG
Molecular Weight	Protein Mw: 49kDa Observed Mw: 49kDa
Storage Instruction	Store at -20°C for up to 1 year from the date of receipt, and avoid repeat freeze-thaw cycles.

TARGET INFORMATION

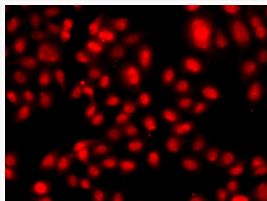
Gene ID	7005
Gene Symbol	TEAD3
UniProt ID	TEAD3_HUMAN
Immunogen Region	130-330
Immunogen Sequence	SSAQIVSASVLQNKFSPPSP LPQAVFSTSSRFWSSPPLLG QQPGPSQDIKPFPAQPAYPIQ PPLPPTLSSYEPLAPLPSAA ASVPVWQDRTIASSRLRLLLE YSAFMEVQRDPDITYSKHLFV HIGQTNPAFSDPPLEAVDVR QIYDKFPEKKGGGLKELYEKG PNAFFLVKFWADLNSTIQE GPGAFYGVSSQYSSADSMI S
Specificity	Recombinant fusion protein containing a sequence corresponding to amino acids 130-330 of human TEAD3 (NP_003205.2).

ADDITIONAL INFORMATION

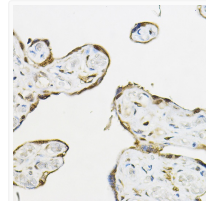
Note **STRICTLY FOR FURTHER SCIENTIFIC RESEARCH USE ONLY (RUO). MUST NOT TO BE USED IN DIAGNOSTIC OR THERAPEUTIC APPLICATIONS.**



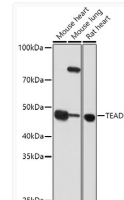
Confocal immunofluorescence analysis of U-2 OS cells using TEAD3 Rabbit polyclonal antibody (STJ29590) at dilution of 1:400. Blue: DAPI for nuclear staining.



Immunofluorescence analysis of A549 cells using TEAD3 Rabbit polyclonal antibody (STJ29590). Secondary antibody: Cy3 Goat Anti-Rabbit IgG (H+L) at 1:500 dilution.



Immunohistochemistry analysis of TEAD3 in paraffin-embedded human placenta using TEAD3 Rabbit polyclonal antibody (STJ29590) at dilution of 1:50 (40x lens). Perform high pressure antigen retrieval with 10 mM citrate buffer pH 6.0 before commencing with immunohistochemistry staining protocol.



Western blot analysis of various lysates using TEAD3 Rabbit polyclonal antibody (STJ29590) at 1:1000 dilution. Secondary antibody: HRP Goat Anti-Rabbit IgG (H+L) (STJS000856) at 1:10000 dilution. Lysates/proteins: 25 µg per lane. Blocking buffer: 3% nonfat dry milk in TBST. Detection: ECL Basic Kit. Exposure time: 60s.